

*'Serving False Creek, Fairview Slopes and Granville Island'*

## Isadora's 7th Annual PUMPKIN CARVING

Saturday - October 28

10 a.m. to 2 p.m.

Judging starts at 2 o'clock

PRIZES include T-shirts and Isadora's Gift Certificates

**Pumpkins Provided**

(through the generosity of Yen Bros.)

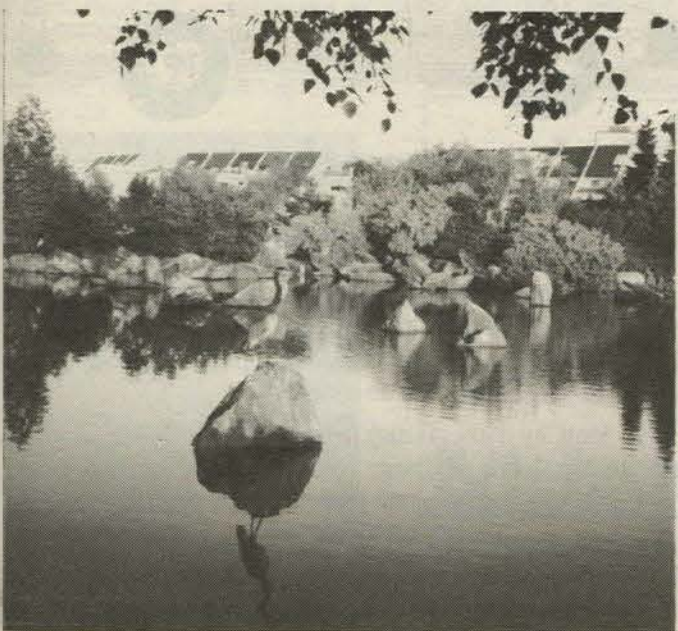
Isadora's provides some carving utensils too but it's better to bring your own favourite jackknife.

As always there will be a wood fire and hot drinks and treats available, as well as the usual brunch and dinner menu

Co-sponsored by Granville Island Project Office



The ever changing lights on the Creek are a constant source of pleasure.



Our resident heron atop his rocky perch blends into the background but his reflection in the still pond is dramatic.

False Creek Recreation Association invites you to the **ANNUAL GENERAL MEETING** Thursday, **October 19th**, 7:30 p.m. at the Centre **Election of 1989-90 Board of Directors** Valid membership is required to vote Nominations are welcome and will be accepted at the Office Refreshments will be served Following the formal business of the meeting there will be a presentation on the expansion plans by the architects.



## Granville Island Wants To Have Some Words With You

The Vancouver Writer's Festival is bringing a rich harvest of words to Granville Island. Adjectives like humourous, fantastic, speculative, foreign, local, poetic, dramatic, political and journalistic. Verbs like read, perform, debate, recite, lecture, entertain and discuss. And proper nouns like Mordechai Richler, Pierre Berton, Martin Amis, Spider Robinson, Bharati Mukherjee and Peter Ustinov.

**October 25th - 29th** at various sites on Granville Island. For more information please call the Festival Information line at 681-4793. For tickets, call any Ticketmaster outlet.



## From the Editor's Desk



### False Creek North Pacific Place

The City's Planning Department will host two evening meetings featuring a slide presentation on the proposal for False Creek North.

**MONDAY, OCTOBER 23**  
7:30 p.m.  
Robson Square Media Centre.

**WEDNESDAY, OCTOBER 25**  
7:30 p.m.  
Science World

#### THE PUBLIC HEARING

will be held on  
**THURSDAY, NOVEMBER 2**  
7:30 p.m.  
venue to be announced

The silence from False Creek South residents is deafening, several occupants of City Hall have said, as November 2nd, the date for the approval of an Overall Development Plan approaches. **CITIZENS, WAKE UP.**

The project is massive; the potential impact beyond comprehension. Concord Pacific and the City's Planning Department have held more than 34 meetings with community and special interest groups; some of us have lost count of the number we've attended.

Although Concord's plans for the long, skinny, awkward, site have changed a lot since the day they unveiled their original model to the blare of fanfares and much b.s., and the proposed residential units has been reduced from 10,000 to 7650, the forest of towers (hopefully not monotonously flat-topped) will still be formidable. It is small consolation the demise of the panorama we have cherished will be gradual over 10-15-20 years.

The fortresses of **South East Granville Slopes** (across from Granville Island) provide a glimpse of what the future holds

Lately we have been (supposedly) reassured that carefully designed peep holes—called "view corridors"—through Pacific Place would leave us the odd peekd at a mountain. Strangely no-one mentions even those will assuredly be obliterated by the as-yet-unplanned Downtown South, immediately north of Pacific Place.

David Osborne devoted much time and energy preparing a thoughtful document for submission to City Councillors and staff by the Community Association. Reproduction of its 33 pages of text and diagrams is impossible. We hope he will not consider our choice of excerpts a massacre, and that readers will find them useful.

## 2020 VISION: Vancouver Landscape

by David Osborne

*"The important determinant of any culture is after all the Spirit of Place"*

Laurence Durrell, 1960

Vancouver is a city of unsurpassed natural beauty, and the vision of its future is revealed in the plans for Coal Harbour, Pacific Place, Downtown South and False Creek East.

In a time of global crisis, global cities, and rapid change, Vancouver is being built anew. The great natural heritage of mountain views, greenery and waterfront are in the hands of

today's Vancouverites.

In the next few years Vancouverites will decide the character and shape of Vancouver for the coming century. The change

of scale is unprecedented. A "Second West End" and a "Second Downtown" will be built. The environment will change as never before. Unprecedented consideration and planning is required.

#### CHANGE IN POPULATION

Residential Population	1989	2020
West End	40,000	45,000
False Creek/Fairview	7,500	9,000
Burrard East	Industrial	3,000
Downtown South	1,000	8,000
Pacific Place	0	13,500
False Creek East	0	2,500
False Creek Southeast	0	3,000
Coal Harbour	0	4,000

#### A NEW DENSITY OF VANCOUVER

	1989	Proposed
West End (ranges 1.5-2.75)	2.2	same
Downtown South	1.5	5-6
Pacific Place	0	2.7
False Creek South	1.3	same
False Creek East	0	3.6

The great cities of the world have been built both by chance and vision. Cities are the most powerful expression of a people's ideal. One of the enduring traditions has been the desire to integrate nature and city, and establish a harmony with the landscape.

#### San Francisco has zoned their downtown to preserve the views and character of their hills.

To create a livable downtown and one that reflects our traditions and context, a comprehensive plan is required for the downtown peninsular including the False Creek basin (up to Broadway). Of immediate concern is the lack of planning Downtown South. **ZONING IS NOT PLANNING.** It is only a tool of planning. The livability of Downtown South and the blocking of significant views from False Creek are critical questions needing immediate answers. Transportation (including ALRT and local movement around the peninsula) is also critical.

#### The Peninsula is Unique

It has one of the best urban environments in the world. It combines in a vital and livable way, regional offices, regional recreation and a vibrant urban resident community. The preservation and enhancement of this must be the primary goal of any redevelopment

We must recognise that the proposed proposed developments (Coal Harbour, Pacific Place, False Creek East) are setting the land use of the waterfront for the next century, and give more consideration to designation of public use resources for future choices. This could be done through larger designated park across or by phasing critical or potential areas for later development.

#### VIEWS

*"The mountains, water, and Downtown skyline emerged as dominant themes for favourite views."* Vancouver Citizens.

Views Study 1989

*"Canadian cities and villages express rather an arrogant abstraction, the conquest of nature by an intelligence that does not love it"* Northrope Frye

#### VIEWS POLICY

The need for a view policy should be self evident but as yet there is none. Without one, the natural heritage of Vancouver will be lost.

What constitutes a good view may seem simple and clear. But if views are threatened and values are to be attached to a view, then objective criteria are necessary.

#### Significance of Views

A view is more than something to look at. It is an expression of beauty and an intuition of truth. It is the visual expression of shared values, a means of orientation, a symbol of city pride, and an image to the world.

Every city creates its own image. Skylines, hills, rivers, formal avenues, monumental buildings, fountains, plazas, oceans and mountains are the elements of a city landscape. How a city values and expresses these elements determine its uniqueness and livability.

**False Creek South is a place of significant views.** It integrates the city with the natural setting and provides a significant image of Vancouver for both residents and tourists.

#### Uniqueness of the View

There are many types of views in Vancouver; some are private views from homes or offices, some are of neighbourhoods and streets, and some of large parks. One type of view is unique to Vancouver and is prized by residents and tourists. It is the view from the Seawall. One of the great walls of history, it will soon form a continuous walkway around downtown and False Creek. In its short perimeter, it encompasses the history of Vancouver and provides some of the most magnificent views in the world.

#### FALSE CREEK SOUTH SEAWALL IS UNIQUE.

It is the only place along the seawall where a person can stand at the water and see the Lions, Crown, Grouse, the Needles and Hollyburn mountains touching the skyline of the city.

**It is the most dramatic view in the city and should be preserved.**

#### DOWNTOWN SOUTH ZONING

There is no fundamental and irreconcilable conflict between downtown development livability and views. The conflict will arise if the city lacks the vision, the manpower and the desire to reflect the values of its residents.

The creation of a 2nd Vancouver and the unprecedented scale of development demands a better approach than simply rezoning.

Business as usual won't work. More consideration should be given to the context in which the new housing will be developed. The precedent of Vancouver's existing density is an important consideration as it has provided safe and secure neighbourhoods and streets.

The proposed density of 5-6 ES.R. is two-three times the existing density of the West End. It is smaller (approx. 1/2) than the area of Downtown South and has a park, a school, a wider city block and more street frontage than Downtown South. The through traffic is also less than Downtown South. Most residents of the West End feel that higher densities are undesirable. It is therefore highly questionable whether the proposed zoning of 5-6 ES.R. is reasonable.

Conventional wisdom says high densities create more people on the street, more shops and a vital urban area. Conventional wisdom is proving to be wrong, particularly

in the context of Vancouver's downtown.

What is critical is the creation of safe and sunny streets with a choice of amenities and diverse activities. High densities (above 3) begin to create unfriendly and overshadowed streets, and over an area of 15 to 20 city blocks create an unhealthy urban environment. There are limits beyond which high densities create negative, physical, social and economic environments. At densities of 3 to 4 good design and the provision of open space and recreational amenities becomes critical.

# VanCity Prime +1% Personal Loan

*Imagine the fun!*

Shopping for a new car? Looking for some furniture or appliances? Whatever you have in mind, we can help you make it happen. VanCity can pre-arrange your Prime +1% variable rate loan from \$5,000\*, then you can go shopping and get the best deal on a cash basis.

VanCity makes it easy for you to pay off your existing loans or charge accounts with VanCity's Prime +1% variable rate personal loan, guaranteed for up to 5 years.

You're a good deal ahead at Prime +1%. Qualifying is fast. Just complete a Quick Loan form and we'll give you an answer, usually within 24 hours.

Busy days? Arrange your loan over the phone.  
**Call VanCity's TeleService at 877-7000.**  
Monday-Friday 8 am-8 pm, and Saturday 8 am-4 pm.

\* Offer applies to new funds only. Minimum \$5,000.

*You belong with us.*  
**VANCITY**

Broadway and Oak Community Branch,  
1030 West Broadway, Vancouver 877-7000

### 2020 VISION: From p.2

Vancouver is a northern/temperate city which needs to maximize its environmental comfort. The proposed zoning for Downtown South could permit 80-plus 30-storey towers.

For six months of the year the streets would be in shadow. For 12 months of the year streets would be shadowed except from 9-3 in the two summer months.

#### SUMMARY

1. Development comprehensive plan for downtown peninsula and False Creek to Broadway including physical analysis and models.
2. Respect and enhance Vancouver's natural heritage.
3. Establish view corridors from False Creek South and Granville Island.
4. Plan for growth in regional amenities along waterfronts.
5. Provide "destination access points" along the waterfront and link with locale recreational ferries, jitneys, etc.
6. Establish key design guidelines to create a dramatic skyline, and gateway to Vancouver.
7. Plan Downtown South comprehensively including designated open space and context guidelines before rezoning.
8. Zone Downtown South densities in order of 3 E.S.R.
9. Make Roundhouse Park a Destination Park in size and design.
10. Reduce Pacific Place densities.

### The Creek

Published monthly on the 15th of every month.

Circulation: 5,000 — False Creek, Fairview Slopes, Granville Island

Publisher/Editor: Beryl Wilson      Creek Office: 734-3369

Mailing Address: **The Creek**  
c/o False Creek Community Centre  
1318 Cartwright Street  
Vancouver, B.C. V6H 3R8

FOR ADVERTISING RATES AND INFORMATION ON FLIER DELIVERY CALL 734-3369

### FAST WEDDING BELLS in SPRUCE VILLAGE

Jan Carter and Jeff Swannell (who met through a neighbour's matchmaking so spectacularly successful we're tempted to give her name and Tel.No.) did it in 3's. Sure after only three dates on a Colorado ski holiday three months later they decided to be married "tomorrow." A friend found a judge to say the proper words, but he didn't have the proper papers, so three days later they met him atop a ski hill, said the words again, and signed on the dotted lines.

Jan's family felt a bit cheated: when they came west for her Law Graduation ceremony in June, she and Jeff did it all A THIRD TIME. "We think it will stick" says Jan.

While holidaying in Toronto in September Sandra Gilmore and Bob Scott decided a fall foliage in New England would make a pleasant honeymoon, and forthwith, without fuss and foferah, tied the official knot on September 23.



THE BIG NEWS is Carole Farley and Morgan Stewart were married on Bowen Island on October 8th, equally hastily. But hardly a hasty match after 14 years. CONGRATULATIONS.

Not to overdo familiarity, they started married life by Carole going off for a two-week trip to New England with a woman friend!

This reporter's application is already under the Matchmaker's door in the hope all this marrying around our courtyard is contagious.

### "Spinner's Inlet" A perfect bedtime read

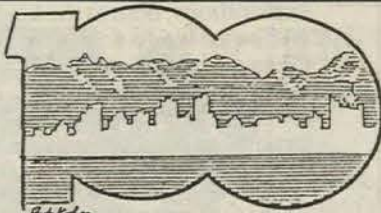
A decade ago a friend gave me a little book—Helen Hanff's *84 Charing Cross Road*—which was such a delight I gave it to six people for Christmas. To this day they remember and thank me occasionally.

This year they may receive Don Hunter's *SPINNER'S INLET*.

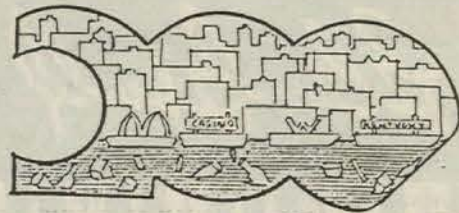
The book jacket says it all:

*The fictional community of Spinner's Inlet, in the idyllic Gulf Island along the west coast, is home to some unique and engaging characters. Descendants of pioneer settlers, native Indians and more recent arrivals from points east weave their way through these warm and witty short-short stories. Mostly funny, often touching, the tales in this irresistible collection reveal how appealing life might be on a small and friendly island.*

mind you don't fall out of bed from laughing.



1986



2086?

Bob Kohn (of Leg-in-Boot Sq.) may be reassured we are not now likely to be threatened with waterfront fast food joints, as he depicted in his 1986 NOW and THEN drawing, but in a personal brief to City Hall he reminds our movers and shakers: "of the ubiquitous shutterbugs who use the panorama as a fitting backdrop for their loved ones; of commercial photographers who use the background to show off new models, be they cars or next season's fashions; that it is a favourite background for newlyweds' wedding photographers, TV interviews and talk shows, with movie makers, for postcards and tourist literature. Tourist groups and visiting VIPs are brought to the seawall to be impressed by the beauty of Vancouver.

So perhaps it is not just a few cranks who keep harping away about views.

(It will be said) "if we were to restrict building heights to accommodate the view, we must have the trade-off in the form of more expansive, lower buildings. This would mean less space for parks and other public amenities.

But that is true only if there were some God given law that says the developer **must** building almost 8000 dwelling units and a certain amount of commercial floor space.

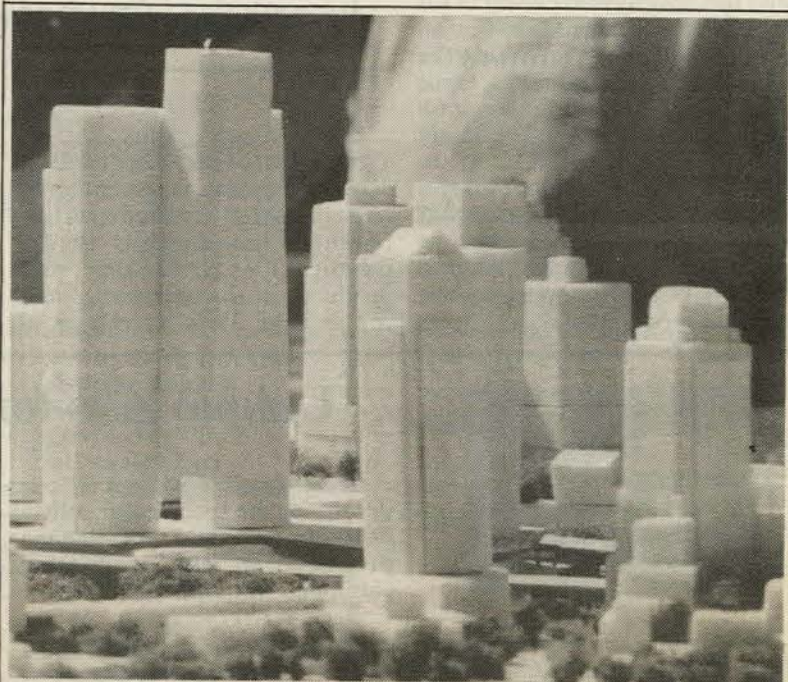
Perhaps the site will sustain only 4000 dwelling units and a comparable proportion of commercial space if the natural beauty of the city is to be respected.

### NEW DIMENSIONS FOR PLANNING

"As we approach the 21st century, there has been a good deal of rethinking the goals of urban planning. Traditionally development has been thought of as 'more' and 'bigger.' A bank's prestige has been reflected in the height of its office building and cities vied with each other in having the tallest building. Since city land is limited, growth must be largely vertical; restricting heights becomes synonymous with restricting development. . .

Today urban planners have new concepts of what constitutes development, resulting in different goals and objectives for their communities. No longer do they—and indeed some civic politicians—talk of growth for its own sake, but the aim has become sustainable growth and livability, i.e. the "healthy city."

Vancouver is facing the crucible between traditional and new concepts of urban strategy and planning."



A view of the Pacific Place model from seawall walking level.

# ISADORAS

COOP RESTAURANT



WEST COAST FRESHNESS NATURALLY 681-8816

AT THE ENTRANCE OF GRANVILLE ISLAND, JUST PAST THE KIDS ONLY MARKET, TURN RIGHT.

NOW  
25th  
YEAR  
SERVING  
VANCOUVER

## McIVER'S

**APPLIANCE SALES AND SERVICE**

**854 WEST 6TH AVE**

Huge Selection  
of Rebuilt Appliances  
and Parts

FULL 1 YEAR WARRANTY  
ON REBUILT APPLIANCES

**We do housecalls**  
**879-5222**



On Sept. 18th a small invited audience was treated to the compositions of Canada's own master pianist, Glenn Gould, to mark the opening of the exhibit "Glenn Gould 1988" at the Vancouver Museum.

The musical offerings were interspersed with cuts from Gould's CBC radio broadcasts in which he wove spoken commentaries in polyphonic style to experiment with our abilities to listen to several strands at once, a kind of audio channel changer.

The brevity of the offerings and the novelty and charm of his creativity was marred only by an over-indulgence in rendering the whole of his String Quartet, Opus 1, a work seeming to lack 'destination points', and certainly too long and convoluted to deserve inclusion in toto on this occasion. The right note was struck by a suitably humorous rendering of his "So You Want to Write a Fugue" to wind up the musical programme.

All credit is due the Glenn Gould Society and its volunteers for mounting this exhibit, which will tour the country when it leaves here next January, and to the Vancouver and Ottawa Museums, Yamaha, CBS, and the fine performances by Jane Coop, the new-look Purcell String Quartet and singers, Alexandra Browning, Phyllis Mailing, Bruce Pullan and Lee Jameson.

The exhibit includes Gould's piano, memorabilia of his life, work and ideas and includes a special listening room where 7 of his hour-long radio documentaries can be heard.

by Morag Cuthbertson

Glenn Gould, who died in 1982, a man of rare talent and an eccentric genius, is remembered as a composer, conductor, writer, teacher, broadcaster, media pundit, TV personality and producer of documentaries and recordings. His intellectual

explorations, both at the keyboard and away, led to some innovative ideas about the nature of sound. He regarded the radio documentary as a work of art, structured somewhat like a fugue or a sonata.

\*\*\*\*\*

## Plans afoot to acquire Glenn Gould's piano for Vancouver

Glenn Gould's Chickering Piano is no ordinary instrument, but then its owner was no ordinary man. He considered the instrument's touch and action to be absolutely perfect. It is part of the Glenn Gould legacy, the embodiment of a legend, a symbol of Canadian excellence.

The Glenn Gould estate is willing to let Vancouver keep this priceless artifact as part of a long term exhibit at the Orpheum theatre, which is a National Historic Site.

Individuals and corporations are invited to join in making this project happen—contact John Dyck, Vancouver Civic Theatres, 649 Cambie St. Tel. 665-3050.



VANCOUVER PRESSURE WASHING LTD.

Patios \* Walkways \* Parking lots, etc.  
Specializing in Window Cleaning

Commercial \* Residential  
(False Creek references)

Darren Doll Tel: (604) 873-1167 Pager 290-0605



THE VITOL-27 FAMILY

Alfalfa	Horsetail	Red Clover
Avens Root	Hydrangea	Rose Hips
Blessed Thistle	Hyssop	Rosemary
Blue Violet Leaves	Licorice Root	Sage
Chaparral	Marjoram	Thyme
Culvers Root	Melilot	Valerian
Dandelion Root	Mullein Leaves	Watercress
Ginger Root	Myrrh	Woodruff
Ginseng	Parsley	Yellow Dock

100% Natural Herbal  
Drink Available

And just the right blend of healthful honey and mineral-rich molasses to impart a delectable taste.

The VITOL-27 herbs have been carefully chosen for Synergistic harmony and maximum benefit for major body needs.

Call WILMA: 734-4808



A member of the TRILON group.

FALSE CREEK & FAIRVIEW SLOPES SPECIALIST

Residential Real Estate Services  
1921 West 4th Avenue  
Vancouver, B.C. V6J 1M7



BEVERLEY CHAMISH

Bus. (604) 731-8222  
Res. (604) 737-8139

## Unique gifts for unique people

Creek readers will recall our describing the spectacular collection of stamps Anna Banana produced as the graduating catalogue for the Emily Carr College of Art this spring. As was evident from the wide variety of works represented in it it is possible to produce a distinctive stamp from almost any image.

Space does not permit outlining the details of production. Call Anna Banana promptly at 876-6764 to find out more.

For longer term planning this International Art Post has great potential to RAISE FUNDS or RAISE A PROFILE.

Voluntary agencies have done it for years with Christmas and Easter Seals. Any association, society, arts organisation, conference sponsor, sports team, etc. could do it too. There is no limit

to the images that could be used, nor to potential purchasers—members, subscribers, audiences, delegates, fans.

Production costs for 1500 copies of a 9-stamp full colour Commemorative Block are \$1100. Sold for \$5 they would yield \$6400.

As a profile-raiser or promotional souvenir for a business, resort, restaurant, mall, even a political candidate, the creative possibilities are endless.

This Commemorative Stamp concept is especially appealing as a way of celebrating special family events—weddings, 25th and 50th anniversaries, birth and graduation announcements. Wouldn't a stamp of one of those "Family Clan" photographs look wonderful on Christmas card envelopes?



INTERNATIONAL ART POST

It's THAT time of year again. Time to think about Christmas gifts for business associates, clients, friends, family and that person who has everything.

This year you could make them feel like royalty with a unique and flattering gift... put them (or their house, car, horse, boat, cat, dog) on a full-colour, gummed stamp for use on mail, business cards, letters, etc.

ANNA BANANA, of BANANA PRODUCTIONS, is presenting an introductory offer of 500 copies for \$80 but in order for stamps to be delivered early in December the absolute deadline for orders is October 30.

# Images

HAIR DESIGN

**1st ANNIVERSARY OPEN HOUSE**

Fri & Sat, Oct. 20, 21

featuring

1/2 Price Haircuts and 20% Discount On All Hair Products.

plus

30% off any chemical services booked on these days.

**ENTER TO WIN A TRIP FOR 2 TO VICTORIA**

(flight & accommodation only)

or Lunch for 2 at Stamps Landing Pub!

**HALLOWEEN BASH SAT. OCT. 28**

Halloween Plans? Costume Party? Trick or Treaters? Let Images professional makeup artists help you!

**HALLOWEEN MAKE-UP FOR KIDS OCT. 31**

Mom, come into Images and we'll do your kids Halloween makeup! No mess, no bother for you, just convenience. All Kids Welcome!

**802 W. 6th Ave. (corner of 6th & Willow) 876-4444**

Inspired by the Ogoogo flurry last month, Renie Marshall, who dashes off poems in minutes, popped this through The Creek letterbox just as we'd gone to print.

### Up The Creek

*There's "Nessie" over in Scotland,  
Having a ball in Loch Ness.  
And out in the far Himalayas,  
The "Yeti" still has great success.*

*Granville Island, of course, has its "Crane" that  
Is constantly on the go-go.  
And out there in Lake Okanagan  
Is that old rascal, "Ogoogo".*

*With the "Sasquatch" roaming the Rockies  
Apparently timorous and weak,  
Don't you think, Beryl, we should divulge  
The "secret" of False Creek.*

*We don't have a frightening monster -  
Well, that would be superficial  
Since anyway we meet with such  
In this and that city official!*

*But we could confess who haunts us  
In this area so unique -  
"Flossie", our friendly floating Flop  
The Floozie of False Creek!*

P.S. Accept any offers from the National Geographic!



## Pat Cairns Quilt Studio

Each quilt made in the studio is individually designed and crafted. No two are the same. Whether small or large, for wall or bed, these unique creations bring warmth and color to your home. Call today to discuss your needs with Pat.

684-6661  
1420 Old Bridge Street,  
Granville Island, Vancouver, V6H 3S6

## THE T COZY

English Teahouse

Come and see us to enjoy a good cup of tea (we even warm the pot!)—coffee too

Hot buttered crumpets, scone with Devon cream, asst. sandwiches, savouries, pastries

We also cater to all needs—so don't forget to call us for your holiday occasions.

Net Loft Complex Granville Island Open 7 Days a week  
688-3451/682-2979

## Lotus & Properties Inc.

Accredited Real Estate Appraisers — Consultants — Negotiators  
Market Valuations:

Gabe Varga, AACI

Residential (24 hr. service)  
Industrial  
Commercial  
Investment (Business)

Assessment Appeals  
Expropriation  
Arbitration  
Litigation

732-4008

1216 West 8th Avenue  
Vancouver, B.C.



**Diamond Club**  
NATIONAL REAL ESTATE SERVICE

"FAIRVIEW SLOPES SPECIALIST"

LESLEY HICKS

Bus. (604) 228-9711 (24 hr. pgr.) Fax. 228-1113  
Res. (604) 734-8043/736-8043

NRS BLOCK BROS. REALTY LTD.

3479 Dunbar Street,  
Vancouver, B.C. V6S 2C3





The sun never sets on the Arts Club Theatre. This season it brings you...



**MORE MAGIC! MORE MUSIC!**

**MORE MYSTERY! MORE MAYHEM!**

**Running until Nov. 4th at the Mainstage on Granville Is.**

Shakespeare's story of two sets of twins, *THE COMEDY OF ERRORS*, directed by Morris Panych, is set as a Western in an Arkansas town! "Brims with energetic fun" said the Sun's Lloyd Dyck. "Glitters like a vein of Barkerville gold" said the Courier's Tom Tevlin.

Mon.-Fri. 8:30 p.m.  
Sat. 6:30 & 9:30 p.m.  
Wed. mat. 5:30 p.m.

Next, for two weeks only (Nov. 8-25) *STEEL MAGNOLIAS* returns. It's a warm and touching comedy about six southern women—set in a hairdressing salon of course.

In December, *BROADWAY BOUND*, the third episode in Neil Simon's hilarious autobiographical trilogy (which began with *Brighton Beach Memoirs*); directed by Bill Millerd.

In the New Year, Lanford Wilson's searing drama *BURN THIS*, directed by Janet Wright, followed by Noel Coward's witty English romp, *HAY FEVER*, starring Norman Browning, directed by Bernard Cuffling.

Spring may bring a new musical by Ann Mortifee, *THE ARABIAN KNIGHT*, among other things. Stay tuned.

**Across the alley on the Revue Stage**

The new season opens Oct. 27 with the powerful Billie Holiday musical, *LADY DAY AT EMERSON'S BAR & GRILL*. Starring acclaimed New York soprano Gail Nelson, directed by Leon Bibb, this one-woman story of Holiday's heartbreak-and-heroin haunted life is the closest you will ever come to seeing the memorable singer live on stage.

If you missed Jeff Hyslop & Ruth Nichol's *A LITTLE SHOW* at the Soft Rock Cafe this summer, you have another chance. DON'T MISS IT AGAIN. They're bringing it back to the Revue Theatre from Dec. 6th to mid-January. (A perfect holiday season outing for a group of friends).

The New Year will be upbeat with David King's *MANIC BRIDE* (featuring the First Fabulous Follies) and Eve Merriam's toe-tappin' "musical diversion" *THE CLUB*, directed by Jeff Hyslop.

With the Arts Club's flexible running dates you have to keep your eyes on the schedule, but that's not difficult as we all pass by en route to market so often.

We glean from a news release this may be the Arts Club's last season at

**Seymour Street**

Opening Oct. 17 (to Nov. 11), is Angry Actors' production of *DRINKING IN AMERICA*, a hysterical drive through America as seen through the eyes of 10 crazy characters, all played by Jay Brazeau.

It will be followed by a new by a new Canadian play, Doug Greenall's chilling, contemporary thriller *DEAD SERIOUS*, directed by Mario Crudo.

**With a Super Series Club Card**

you can see any 8 plays for one low price. Bring a friend and receive \$2 off regular ticket price for your friend. Choose:

- SS1 (Anytime)\* \$99.00
- SS2 (Monday-Thursday) \$85.00
- SS5 (valid Previews only) \$59.00

Senior & Student rates available. The Super Series Club Card is issued to an individual and is non-transferable.

If you didn't know it YET, the Arts Club Box Office is three steps south of the Mainstage entrance door. Tel. 687-1644

**The New Play Centre celebrates 20 years of excellence and innovation**

For 20 years the New Play Centre, under Pamela Hawthorne's direction, has been home to the best in new Canadian theatre.

Under its new Artistic Director, Paul Mears, it celebrates its 20th anniversary by featuring three of B.C.'s finest playwrights and a festival of new works.

described as an outrageous comedy about a young couple's fantasy weekend away from it all. The other guests include a harried Mom and her unhinged punk daughter. The proprietor is kind of strange and the staff is psychotic, except when they're suicidal. The perfect fall vacation.

Oct. 20 to Nov. 12.  
Tues.-Sat. 8 p.m.  
Matinees Wed. & Sun. 2 p.m.  
(pay-what-you-can on Sundays)

At the Waterfront Theatre on Granville Island. 8:00 p.m. Tickets: 685-6217 & Ticketmaster outlets.

The next production peaks the interest of the Creek Editor-cum-Bed & Breakfast-host.

**"HARBOUR HOUSE"** by David King is set in a rustic, Vancouver Island Bed & Breakfast. It's



**WINE TASTING**

is an increasingly popular fundraising ploy. For the benefit of the

**VANCOUVER MUSEUM**

Public tastings of 22 Sonoma Valley wines will be held Monday/Tuesday, November 13/14 at the Coast Plaza at Stanley Park. Tickets: \$20 from the Museum (736-4431). Purchase possible at on-site wine shop.



**GRANVILLE ISLAND OFFICE SERVICES**

- Word Processing
- IBM XT PC
- Word Perfect 5
- Laser Printer
- Photocopying
- FAX

Boardroom Facilities  
Telephone Answering

Office Systems & Management Services including Bookkeeping, Accounting and Payroll in association with MERLIN CONSULTING SERVICES

1504 Duranleau Street  
Granville Island  
TEL. 669-3144  
FAX 669-0028

FREE 20 MIN. PARKING IN FRONT OF OUR DOOR!

**Garbage Can Art Contest 1st Prize won by newcomer this year**



It's astonishing what people can do to a plain, corrugated garbage can. Lisa Strecko, started in 1987 with a wild, contemporary, food theme; in 1988 created a beautiful stained glass window effect and this year outdid herself with a theme reminiscent of medieval illuminated manuscripts. Lisa has been the undisputed winner for two years and on a sunny September Sunday Judges Raymond Chow, Catherine Broderick and Evelyn Atkinson chewed pencils a long time before finally handing the \$300 First Prize to David Pan for the extraordinary results of four hours of sawing. Perched behind David Pan is George McInnis of Granville Island Ferries, masterminds and chief sponsors of the event. Lisa was awarded 2nd Prize of course.

Be sure to stop by the Information Centre in the next week or two where all the cans are displayed. A remarkable sight.

**RENEW NOW**

**Autoplan**  
Official Mark

---

**FALSE CREEK INSURANCE BROKERS**

"For All Your Insurance Needs"

We Offer: HOME CONDOMINIUM TENANT  
BOAT BUSINESS TRAVEL LIFE  
DISABILITY R.R.S.P.

- Convenient Monthly Payment Plan
- Mastercard & Visa Accepted on all Insurances inc. Autoplan

**MONTH END HOURS**  
Tuesday Oct. 31st 9 a.m. - 8 p.m.  
Wednesday Nov. 1st 9 a.m. - 7 p.m.

**PHOTOCOPY & FAX SERVICE AVAILABLE**  
TEL. 874-4476 FAX. 874-5570  
Business Hours: Mon. - Fri. 9:30 - 6:00. Sat. 1:00 - 4:00

**Fairview Gold Plaza, 804A West 6th Ave., Vancouver**

The Back Stage Lounge at the ARTS CLUB THEATRE

**The Best in R & B  
Friday & Saturday nights**

Open seven days a week  
687-1354

**Next to the Public Market on Granville Island**

Home of the Vancouver Scotch Club

**GROUP RATES**

Are you having a business meeting? A party? or just a night out with the gang?

Make your evening extra special at The Arts Club Theatre. We offer special rates for you and your group of 10 or more. Just call 687-5315 and ask for details!



After reading our item on the riot of colour June Cox maintains in her very visible Millbank garden, **Mariam Habib** called to tell us of an almost hidden garden at the western end of False Creek—at the end of Twin Rainbows' 1465 Lamey's Mill Road. The Co-op's gardening committee members have special spots they tend; this enchanting, lovingly crafted quiet space is the pet project of **Alf Strand** who transformed a boggy bit of wasteland into a tiny pond four years ago. Detour by there on the next trip to the market.

## Community Association

The Community Association is back to its regular first Wednesday of the month meetings at the Community Centre, after taking the summer months off.

Heather Neighbourhood Committee Chairman Ellen Brown would no doubt have reported on their deliberations more fully in this issue had she not been away. The Committee noted with appreciation a letter from Alderman Carole Taylor to Deputy City Manager Ken Dobell about the proposed marina close to Monk McQueen's. She raised questions about its viability, whether adequate parking was to be provided and whether there would be provision for kayaks and canoes.

The Committee has also remarked that a valet service video and pizza outlet is an inappropriate enterprise in Leg-in-Boot Square.

### PARKADE PROPOSAL FOR POLYGON SITE

The F.C.C.A. agreed to recommend to the City that the area between two new buildings currently under construction, which is dedicated park space, be utilised for underground parking with park on top, as was done with Spruce Marina's underground parking and the Charleson playground.

**VANDALISM** in the area is a constant concern. John McBride is attempting to collect information on incidence, and any security measures attempted, from as many enclaves as possible.

### BICYCLE MENACE

A request is to be sent to the City's Bicycle Advisory Committee asking for signs at Anderson St. and Leg-in-Boot Sq. cautioning against excessive speed around pedestrians.

The October meeting was attended by David Podmore of Vancouver Land Corporation in view of the fact the 6th & Cambie "School Board" site is being considered for one of VLC's rental housing projects. He gave assurances the VLC is as concerned to seek solutions to existing traffic and parking problems as Heather neighbourhood is. He has already met with local residents and will continue to do so.



## Christmas Market

TRADE & CONVENTION CENTRE - Cruise Ship Level  
November 8-12

Weekdays: 11 a.m. - 10 p.m. Sat/Sun: 10 a.m. - 6 p.m.  
Adults: \$5 - Seniors/Students: \$3 - Show Pass: \$7 - Children under 12: Free

A show and sale of fine art and craft from more than 100 Canadian artisans; five days of the best Christmas shopping including entertainment, craft demonstrations, non-stop craft making video presentations.

2000 sq.ft. of Gallery space exhibiting the works of 25 invited artisans.  
Contest: Enter to win a \$1000 shopping spree.  
Two-hour "FASHIONARTS PRESENTATIONS" by the Vancouver Fashion Group

featuring one-of-a-kind original works of wearable art by B.C. designers. Presented in an elegant tea-room style in a "Haute Cuisine Cafe", serving fashionable food prepared by Daniel of Vancouver.

Weekdays: 12:00, 3:00, 6:00 p.m. Sat/Sun: 12:00, 3:00 p.m.

Sat/Sun: **IMAGINATION MARKET** Christmas tree decoration workshop for kids aged 3 to 90.  
Information: Circle Craft: 684-2422

# We've scared up a chilling new treat



## HALLOWEEN GIFT CERTIFICATES

This year, treat your little goblins to McDonald's Halloween Gift Certificates. A book of 10 Certificates for just \$1.00. Each Certificate entitles kids 12 and under to a special 2 oz. Sundae. Their choice of Hot Fudge, Caramel or Strawberry. So this year, treat them to the great taste of McDonald's. Because any time's a good time for a Sundae!

BOOK OF TEN, ONLY  
**\$1.00**

For a limited time, at participating McDonald's. While supplies last.

NET PROCEEDS SUPPORT  
B.C. SPECIAL OLYMPICS

**GOOD TIME.  
GREAT TASTE.**





# 665-3425 Noticeboard

by Sheila Foley  
President, False Creek Recreation Association

The future, in time, becomes the past and the present is only now, and right now I am pleased to relay that our efforts of the past are now coming into fruition.

Since the Centre's inception in 1981 we have grown from infancy to adulthood. We have a membership to date of 4000 and a participation rate of 95,000, which more accurately reflects the tremendous growth in the use of our services at the Centre. This has led to a need for a larger facility.

In 1986 we were given a site, Building 81, along with much chased-after local government funding to plan for development of the site. This year we were also given Buildings 82 and 83 which are adjacent to Building 81 alongside our present facility. In due course a new Canoe Boat Storage will be constructed. More funding for this, now much larger project, is still be sought.

All this has been made possible through the co-operation and generosity of Granville Island Trust and Canada Mortgage & Housing Corporation. In this visionary, communal approach to the future development of Granville Island we are very fortunate to be a part of this growing mosaic of commercial, residential, cultural and recreational 'Paradise Island'.

Most of our focus this year has been on the architect's conceptual plans for the new expanded facility and I am pleased to say this phase is just about finished. We can now move on to the construction stage to start early

**SMALL WORLD**

**SATURDAY, OCTOBER 21**

10 a.m. - 3 p.m. \$1.00/family;  
50¢/adult; 25¢/children, teens, seniors

A flea market exclusively for selling children's commodities. Come for some unbelievable bargains on children's toys, clothes, books, Refreshments & free child minding available

**FLEA MARKET**

in the New Year. There will be as little disruption to the programs as possible, but some classes may have to be moved to a close-by location for a short period of time.

Unlike past years, this year was not marked by any great celebrations, visiting nobility or disasters. But still noteworthy were the Dragon Boat Races, which again made headlines, with the Ladies team winning in Hong Kong this summer.

One of our well known local residents, the Hon. Kim Campbell, was well received on the occasion of her Neighbourhood Night held at the Centre. A good turnout by local residents and a responsive audience all made for an enjoyable and informative evening.

During the past year I continued with the regular business of attending Presidents' Meetings, BCRPA Conference, Volunteer Award Dinner and the ongoing monthly Association Committee Meetings.

The Clubs—Tennis, Canoe, Sailing, Pottery as well as the Martial Arts programs, dancing and, during the summer, the Water Park, are again the seal of our success in providing both indoor and outdoor recreational activities suited to both our environment and our users. Recognition must be given to those who plan and manage the programs throughout the year that make these activities unique to our Centre.

The success of the Community Centre depends, and is achieved, only by the unified efforts of its volunteers, staff members, Parks Board liaison and Commissioners through planning and implementing what is here now and what will be here in the future.

We are always happy to welcome people interested in serving on a committee or the Board. Please phone the Centre at 665-3425 or drop in to ask one of the staff about becoming a member.



**AN ELEGANT TOUCH**  
Salons and stores often have candy dishes at the counter. Only at **EMERALD'S** (2nd & Anderson) are they colour co-ordinated with decor—emerald green of course.

# Seniors' Scene

by Marge LeGresley

At a well attended meeting on October 4th we welcomed a number of new friends and dealt with many important matters.

reprints to share with friends. Names were received for our table at the Oakridge Centre where tickets for the lovely quilt, donated by Rose, will be sold.

Everyone enjoyed the bus trip to Chemainus and agreed it was one of the best outings yet. Annie showed her excellent pictures and will arrange for

There are a number of events scheduled for October/November which you should note on your calendars.

**Thurs. Oct. 19** — Seniors' movie at Lougheed Mall, "My Favourite Year". Free tickets available one week ahead from Jean.

**Thurs. Oct. 26** — Bus and ferry trip to Fort Langley, leaving the Centre 9:30 a.m. Tickets \$7—sign up at the office.

**Friday Oct. 27** — Pot-luck supper from 6 p.m., followed by BINGO. Bring your favourite dish.

**Sunday Nov. 19** — **CHRIST CRAFT FAYRE** 10 a.m. to 4 p.m. As usual the Seniors will be running the Tea Room and Bake Sale in the Lounge and we shall need all your generous donations of goodies, as well as volunteers to help during the day. Lists will be prepared at the November meeting. Also this is the day some lucky person will win the raffle for the lovely quilt.

**V.S.O. Series "Tea & Trumpets"** opens on **Oct. 19** at 2 p.m. at the Orpheum. Anyone interested in subscribing for the series may call 876-3434 for further information.

**CHRISTMAS MOUNTAIN FESTIVAL at Whistler. Wed. to Fri. Dec. 13-15.**

This is a wonderful opportunity to experience Whistler in all its winter glory. Detailed information is posted on our notice board at the Centre and there are leaflets available. The itinerary for the three days sounds really exciting. Why not give yourself an Xmas treat in advance? A deposit of \$50 is required. Let Jean know if you are interested.

plans for our Christmas and/or New Year's celebrations. Come to our next meeting on November 1st with your ideas and suggestions.

\*\*\*

To close on a frivolous note, a joke heard recently on TV. "My mother always used to say: "The older you get, the better you get—unless you're a banana." (If only this were true!)"

\*\*\*

It's not too soon to discuss

**LAUREL PRESCRIPTIONS**

#102-888 WEST 8th AVE., VANCOUVER, B.C. V5Z 3Y1 **873-5511**

PRESCRIPTION & MEDICAL SUPPLIES

- Drug Information & Free Prescription Delivery
- Rental or Sale of Crutches, Walkers, Wheelchairs, Breast Pumps
- Sigvaris and Support Stockings • Diabetic Supplies
- Fast, Friendly Service

## Time to check safety deposit boxes

The advent of the Canada Savings Bond season is a good reminder to check your safety deposit box and your banking arrangements in general.

Savings Bond that has come due," says Cunliffe. "So check your CSBs. If any have come due, cash them in immediately. Look especially for any bonds that still have coupons. The last of these bonds matured four years ago."

This is particularly important if you've moved during the year and your interest cheques are deposited directly into your bank account or sent to you by mail.

If you hold any bonds coming due this year and plan to re-invest the proceeds in the new issue, you will be able to go to your bank, trust company, credit union or stockbroker and do all the paper work associated with the redemption of Series 37 and the purchase of the new issue in advance — as early as Oct. 19, the date the 1989 issue goes on sale.

"If you have," says Brian Cunliffe, a stockbroker who also represents the CSB Payroll Savings Plan, "make sure you inform the Bank of Canada in Ottawa so that they can make the appropriate changes."

For this and any other matter relating to Canada Savings Bonds, write: Bank of Canada, Public Debt Department, 245 Sparks St., Ottawa K1A 0G9.

"And if you plan to buy this year's issue and want the interest deposited directly into your bank account, remember that you must make these arrangements with every new purchase you make. It will not be done automatically."

Similar to last year, Nov. 1 is the last day you will be able to buy bonds without paying accrued interest.

It's also a good time to check your safety deposit box, especially this year with a big bond issue coming due. Series 37, issued in 1982, matures this Nov. 1. Bonds of this issue will no longer earn interest after that date.

"While you're at it, take the time to make a list of all your valuables. In the case of Canada Savings Bonds, the list should include maturity dates as well as serial numbers and the exact name in which each bond is registered. Keep both your CSBs and a copy of the list in a safe place.

"And never endorse your interest cheques or bond certificates before presenting them for payment."

"That applies to every Canada

## CREEK CLASSICS

Consignment Clothing Boutique

665A Market Hill (the entrance to Leg-in-Boot Square)

- Designer and imported clothes
- Fox and mink coats; suede and leather suits and jackets

**NEW** lingerie

**SALE November 1st-8th 25% off Sweaters and Coats**  
Hallowe'en costumes available

Clean your closets for money -50% of the profit (sizes 12-18 and accessories are needed).

Call **WENDY** or **VIRGINIA** AT 87-CREEK or 876-0301, or drop off your clothing to 665a Market Hill

**Mon.-Fri. 11 to 6 p.m. Sat/Sun. Noon to 5 p.m.**

Attach name, Tel. No. and estimated value (please be realistic)



**Leona Lattimer**

1590 West 2nd Avenue, Vancouver, B.C. V6J 1H2 (604) 732-4556  
Store Hours • 9:00 am-6:00 pm Mon-Fri • 10:00 am-5:00 pm Sat & Sun

**KRAZY KLEEN**  
MAID SERVICES INC.

**WE ARE 'YOUR' HOUSECLEANING PROFESSIONALS**

**Quality Controlled Bonded & Insured**

"Don't Hide Your Head In The Sand" Let Us Give You A Hand.

**KRAZY KLEEN MAID SERVICES INC.**  
**276-2767**

**CLASSIFIEDS**

**20 words: \$4 (min.) 30 words: \$6**  
 Deliver copy to Creek mailbox at Community Centre by 8th of month. **PAYMENT MUST ACCOMPANY ad.**

**ACCOMMODATION WANTED**

Mother of two seeking 2/3 b.r. suite in False Creek for Nov.30 (rent or sublet).  
 Tel. 875-9684

**GOING AWAY THIS WINTER?**

Reliable, energetic visiting Grandparents can look after your home/plants/pets. Seeking accommodation anytime from December to March. Excellent references.  
 Please call Sheila:  
 (H) 733-4084; (W) 666-2987

**LOST!**

20 lbs. in one month  
 - Herbal Nutrition  
 - Lose inches and Cellulite  
 - Guaranteed 100%  
 Call: Ilona Deczki, 522-4322

**WANT A?**

- speech written  
 - special Christmas story or poem  
 - typing/editing in French, English or German  
 - translations  
 - a newsletter drawn up  
 Just phone 876-5769

**FOR SALE** Antique statuette on stand, Taoist Buddhist priest, Chinese enamelled biscuit ware — "famille verte". Collector's item. Best offer. 876-5769.

**A BIBLE CLASS begins again**

Songs, puppet stories, verse memory, projects and Bible stories keep the children actively involved. Children aged 6-12 are invited to the False Creek Community Centre, Fairview Room, Mondays, Oct. 17-Dec. 18 (except Nov. 13), 4-- 5 p.m.  
 The class is free. Children may join any time during the series. Parents are welcome. Questions? Call Janet Simrose at 321-8497 or Canadian Sunday School Mission at 581-3762.

**CREEK HANDYMAN/ GARDENER**  
 Bob Holden

732-7123 or 926-1590

**VOLUNTEERS MAKE A DIFFERENCE**

by Val Upton, Volunteer Coordinator, Burrard Health Unit

Volunteers are in every neighbourhood where city people live and relate to one another as friends and neighbours.

Not all of us know our neighbours. Some of us work full-time in other parts of the city, or we are new to the neighbourhood. Agencies like your local Health Unit can help you meet people in your area through volunteer placements.

Volunteers come from all segments of the population and range in age from 10 to 95.—like Mary, the high school girl who just moved to Vancouver and helps a single mom with her twins; like Bob, a recently retired social worker who visits lonely older people; or John, 90 years of age, who plays crib with a housebound neighbour; or Anne, widowed 2 years, who helps Pearl, a widow of 2 months cope with daily needs.

Several False Creek residents volunteer with the Health Unit.

**Rollande Guilbault** is a senior who has been visiting an elderly woman who moved to Vancouver from California last September. They play scrabble once or twice a week. Rollande also volunteers for the Elder's Network as an office (computer) helper.



**Moms & Tots Drop-In**

Volunteers needed to greet parents and help weigh and measure babies.  
 Thurs. 1:00-3:00 p.m.  
 Kitsilano Community Centre

Burrard Health Unit Volunteer, **Wynne Grogan**, (who has been with the programme for two years), hugging a False Creek baby after weighing him at the clinic. Looks like a happy arrangement for both.

**Mark & Verna Jewell** have been with the program for three years. Mark visits an older gentleman to play cards. Verna reads to a blind lady at Broadway Pentecostal Lodge. Occasionally they help out with special requests such as errands for someone just out of hospital or with shopping.

**Chris Frost** is a young woman who visits an older woman in the area.

Another man, who has been involved as a Health Unit volunteer since 1982 started by visiting an elderly couple. Over the past seven years he has seen the wife through two difficult times—the death of her husband and her move into a private hospital. He still spends one afternoon a week taking her out for a drive or lunch. The quality he has added to her life can't be measured.

**CURRENT VOLUNTEER REQUESTS from False Creek area**

Escort for an elderly woman who needs to go to Stan Stronge Pool to do aquacize for her arthritis. Mrs. W. uses a wheelchair and arranges transport by Handidart. She can't wheel herself to the front door of her building. She is independent in the pool; no lifting required. The volunteer would push the wheelchair and give minimal help in the changing room. Mon. or Sat. or both days. Expenses paid; training available. Volunteer can exercise in the pool as well.

Woman (who lives in Mariner Point/Lagoons area) with a recently developed disability that makes it impossible for her to write, would like assistance with letter writing. It is important for her to stay connected with out of town friends. Mon. Sat. or Sun. are best.

51 yr. old woman, new to Vancouver, who has limited energy due to illness, would like assistance with shopping, typing correspondence and friendly advice about Vancouver.

Pleasant older woman with some memory loss would benefit from a volunteer to go out with her, or a family to adopt her.

**VOLUNTEER VISITORS NEEDED**

To play cards and provide companionship for persons isolated in Kits, South Granville, False Creek & Mt. Pleasant areas.

For Seniors who need to go for walks regularly to keep mobile or recover from surgery. Many need minimal assistance but are unable to go out on their own.

To accompany elderly people to view care facilities, visit their doctor/dentist, or occasional social outings.

The Health Unit staff knows of needs in each community and connect people together. Our next training series for volunteer visitors will be held in October.

Call Val Upton at 736-9844

**THE ROUNDHOUSE** is open again for you to look at your ESSO Brick.  
**Wednesday - Sunday**  
 'til mid-Nov. 10 a.m. - 5 p.m. (enter Gate 5).

**SPECIAL BENEFIT**  
 Commodore Ballroom  
 Nov. 16 & 17. 8 p.m.

The legendary **Sun Rhythm Section** (formerly members of the Elvis Presley Band) and local guests **The Dots**.  
 Tix: \$18 from Ticketmaster.  
 Net proceeds to support co-operative medical research and education programmes to improve care for people suffering from back pain and other physical injuries.

**JOIN PETER PUMPKIN at SCIENCE WORLD for a Halloween Safety Weekend**

The Peter Pumpkin Safety program, in partnership with this newspaper, SCIENCE WORLD British Columbia, radio CKNW and your local Fire Department and Block Parent organization, has arranged a special Halloween Safety Weekend at SCIENCE WORLD.

If you are 12 years of age or under, come join the fun at SCIENCE WORLD — in your Halloween costume, if you'd like — or simply enter your name for an October 31st draw for prizes.

To join Peter Pumpkin at SCIENCE WORLD (if you are 12 or under), study the safety tips, fill in the entry form and bring this page to SCIENCE WORLD on either Saturday, October 28th or Sunday, October 29th for half-price admission (\$1.75). Then take part in the Peter Pumpkin Safety Tips Halloween Hunt to earn your Peter Pumpkin Safety Certificate and to qualify for a draw for special prizes. The draw will take place after 5 p.m. October 29th. Wear your Halloween costume to qualify for other prizes.

OR, qualify for a separate October 31st prize draw by sending this entry form — or one you can pick up at your local manned fire hall — with the Peter Pumpkin image coloured, to:

Peter Pumpkin Safety Program  
 c/o 630 — 1050 West Pender Street  
 Vancouver, B.C. V6E 3S7

Peter Pumpkin is Canada's Halloween safety character. He teaches children basic Halloween safety rules in a Safety Program whose concept is endorsed by the Canada Safety Council.

The program is brought to you — as a public service — by Peter and his friends at Smarties, KitKat, Coffee Crisp and Aero. The weekend at SCIENCE WORLD is presented by Peter and his friends at SCIENCE WORLD, CKNW Radio, your local Fire Department and Block Parents and this newspaper.

For further information, contact Peter Pumpkin Safety Desk at 669-1065.



**Can you guess Peter's tips just from the pictures?**


- Ventilated Shelving - Custom Cut
- Free Standing Closet Systems
- Pre-Packaged Closets
- Ventilated Basket Systems
- Tie & Belt Racks
- Coloured Storage Bins and much much more!

**storage systems by LEE/ROWAN**

**interior design warehouse** Full 15 year Warranty  
 858 W. 6th Ave. Vancouver  
 874-5715

Free Home Estimates

Entry Form

Name: \_\_\_\_\_

Address: \_\_\_\_\_

Phone: \_\_\_\_\_ Age: \_\_\_\_\_

**PETER PUMPKIN'S SAFETY PROGRAM**

AERO COFFEE CRISP KitKat

\*Peter Pumpkin is a registered trademark