

# The Creek

VOL.7 No.11

NOVEMBER 1988

'Serving False Creek, Fairview Slopes and Granville Island'

## School Board 2nd choice good news for False Creek

The best neighbourhood developments, carefully conducted, should be win-win situations, for both sides. The School Board's choice of the 6th Avenue/Cambie Street site for their new Education Centre looks like being just that.

(It's the tract of land still commonly referred to as the Expo parking lot)

We have the Hamber Secondary School neighbourhood to thank for several things. First, by its rejection of the Centre, False Creek has the opportunity to have a compatible project on this important piece of city-owned land. Second, the chance to solve what have seemed some insoluble problems for us. Third, and perhaps most importantly, civic bodies and institutions realising if they don't consult the neighbourhood properly, at the beginning, there'll be hell to pay.

City Hall knows full well how a neighbourhood will erupt when it feels it's being stomped on. WHEN will it learn to compel developers, be they civic or private, to consult at the start?

The School Board got their fingers burnt by not doing the job properly. Neither they nor City Hall want a second upset.

The announcement was made on October 19 and Planning Department immediately asked for a group of Heather Neighbourhood residents to work with them. At the November 2nd Community Association meeting

Ellen Brown, Keith Freer, Laverne Jordan, John Philipsson were appointed; two more members will be added from Newport Quay and Connaught Coop.

The School Board has sold its present site and must vacate it by 1990. Thus construction must be underway by the summer of 1989. However, although the process must be compressed to achieve an Information Meeting in January and rezoning at a Public Hearing in late February/March, it must be thorough.

The total site is approximately 5 acres. The School Board building requires 1½ acres; a new road will take up a large slice, leaving perhaps two more development parcels.

All possible uses of the land must be considered by City Council before a proposal is sent to Public Hearing. It is likely a road will be constructed from 1st Avenue, leading out onto 6th Avenue, which should siphon off some of the traffic presently short-cutting through Commodore and Moberley—an increasing problem for the Heather neighbourhood. The most notable benefit for False Creek is the potential for a good number of after-hours parking spaces, permanently.

The Community Association also expects to see some community facilities provided in the new development.

## Annual Community Carolling

Thursday -  
December 15

Without this advance notice, by the end of the month people would be calling The Creek for the date, to plan their Christmas parties. We suspect the hosts and guests never actually get to Leg-in-Boot Sq. for the pre-party singalong, but it's a nice idea.

Bob & Frances Kohn's guests look forward to our performance every year and the C.E.O. appreciates popping up to their overlooking-the-square apartment for snacks and warm-up. (That's Chilled-Editor-Organiser, not Chief Executive Officer).

We may get it perfect this year, but don't bank on that. Last year's experiment with an amplified small organ as accompaniment didn't quite work.

Holiday Inn were extraordinarily generous in supplying the equipment; the poor technician

who wasn't there for the fun of it, and nearly froze to death, can stop fearing he'll be sent again.

This year we'll be lead by a group who sing under the splendid name of HOME MADE JAM. Mostly members of the Bach Choir, they not only sing in tune individually, they sing together a lot.

We've always resisted much organisation, in case we're deterred by a downpour, but if some fan wants to talk McDonalds, or Safeway, or some other good-hearted corporation, into supplying two huge urns of hot chocolate and coffee, let the C.E.O. know—734-3369



## False Creek School celebrates 10th Birthday

On November 2nd False Creek School celebrated being 10 years old. There were cakes galore. On the Monday before, despite the excitement of Hallowe'en, every grade made one.

Four False Creek Coop Mums made a wonderful model of the park, playground and school—in cake of course. Jade McLaren, Judy Parkin, Judy McQueen and Mannie Henricksen should enter the Edible Art Exhibition the next time Cartwright Gallery sponsors one on Granville Island.



Two "Tenners" cut a big cake at the morning assembly in the gym—Nancy Templeton, who's taught at the school since Day 1, and Julian Gelfand, born on the day it opened and new to it this year. (with LAC teacher Jan Coleman looking on).

We even had a First and Next Generation pair. Shannon Patrick finished elementary school at False Creek, and son James started kindergarten there this year.

John Wormsbecker, Deputy Superintendent of Schools until he retired in August, efficiently planted an anniversary tree.

He has a special interest in False Creek School. Not only was he involved in its planning, it was his self-appointed task to ensure the flag was always flying. He's lived at 7th & Oak since 1981 and took a seawall constitutional with his wife at 6.30 a.m. By the time they returned at 7.30 the school engineer should have arrived to perform his first task, raising the flag. If the phone rang that early the engineer could count on it being the Dep.Sup. to say "The flag's not up."

We're not sure whether he's now retired from that job too.

The first two Principals, Stanley French and David Deane looked delighted to be back. Stanley French reminisced about soccer being such a religion for him he couldn't wait for the playing field on top of the marina's underground garage to be finished; he coached school soccer teams on Charleson Park, despite the geese and their 'signatures'.



No wonder making movies takes so much time and money. Just getting 12 shuffled into two lines, all heads visible within the camera frame, was tiring. Getting them with all heads up, and mostly smiling was a miracle.

Front row, lt. to rt.

Laura Pearson, Katrina Strand, Sarah Clarke, Petra Thaddeus, Sean McLaren, Martin Skala

Back row, lt. to rt.

Bim Schumann, Teddy Jardine, Omar Kara, Josh Morgan, Juha Erme, David Lemanowicz

They're real Creek Kids. They've made it through eight years at False Creek School, from Kindergarden to Gr.7, and through three principals along the way.



John Wormsbecker, David Deane, Stanley French

Few of the current school kids would remember Stanley French, who left when they were barely out of kindergarten. But they hadn't forgotten David Deane, Principal for five years until 1987. "Mr. Deane's here", the cry went out, "and kids poured down the stairs and corridors. They mobbed him," reported one parent.

The commemorative plaque on the wall says November 2nd, but as is the way with Official

Functions, the school didn't actually open until November 5th. Teachers and kids sloshed over the Laurel landbridge in the rain, from their temporary space in a 6th Avenue building, through a sea of mud on the unfinished road outside. The press had swarmed all over the school, but was it a picture of its innovative, open-area design that appeared front page the next morning? No, it was a photo of kids up to their shins in water outside!

## Civic Election

'88  
page 2

# Civic Election '88

The following letter was sent to the Civic NDP, NPA, COPE, Mayor Campbell and Independent candidates

The False Creek Community Association is very concerned with the development of Pacific Place. These lands, along with Marathon Coal Harbour and Downtown South are the future of urban Vancouver. They offer unparalleled opportunities to

create healthy urban communities and exciting recreation attractions for present and future generations of Vancouverites.

We are inviting you to comment on this development with specific emphasis on the following issues:

1. Housing densities and 'mix'.
2. Views
3. Maintenance of existing water area, the two bays and the amphitheatre quality
4. Open space and public quality

We believe the next step in the development process is the establishment of a set of detailed policies and procedures to guide and evaluate Concord Pacific's proposals.

Your policies will be published in The Creek. We hope that you will take advantage of this opportunity to further the discussion of these lands.  
David Osborne  
President.

## From Incumbent Alderman Carole Taylor

1. I strongly disagreed with the previous Council's policies which suggested a density similar to the West End across the North Shore of False Creek. We have now adopted a density which is higher than the South Shore, but lower than the West End.

This has been a significant improvement—a good step towards a healthy neighbourhood. The mix we adopted of 20% core needy is similar to the 33% including co-op which exists in False Creek South. I am totally committed to the inclusion of social housing in a balanced community. It is imperative that the social housing of seniors, disabled, low income, etc. be spread throughout the site, and not lumped together in one corner.

I know it works; I lived in False Creek for 10 years.

2. A comprehensive view policy is absolutely essential for Vancouver. We must examine all the ways in which this can be achieved and think through the consequences of each choice. For example: If the height of downtown developments is limited to 150' and the densities remain the same, what will it be like to walk the streets when the building bulk is forced right out to the sidewalks leaving no room for setbacks?

3. I loudly opposed giving up 11 acres of water in the False Creek Basin in return for a temporary walkway. Cut and Fill is a policy which is very important to me. A future development will also have to be careful about how water space is used and moved around.

4. I am afraid I was the only one to vote against the park proposal for the North Shore. The South Shore provides 4 acres of open space for every 1000 people. The proposal for the other side allows only 2.75 acres for 1000 people. It makes no sense whatsoever to accept in principle a proposal which has more people and less park.

## From Incumbent Alderman Gordon Price

Generally, I agree with the False Creek Policy Broadsheets: 16 pages of history, analysis, principles and policies that basically distill a dozen years of City plans and citizen input.

The essentials are there: guaranteed public access to the water, required percentages of open space and social housing, the need for community facilities . . . The list is long. (Copies are available from the Planning Department.)

2. With respect to views, I believe that view corridors must be designated that serve not only the south shore and bridges but also the "interior" views from downtown outwards. The Lions, for instance, can be seen from Vancouver because of the Capilano River Valley. Imagine the Lions as the peak of the downtown core: they have views out to Burrard Inlet. Both perspectives are served by the view valley.

I believe view valleys must be designed and designated as part of the zoning of Pacific Place and Downtown South.

3. With respect to the maintenance of the existing water area, the policy is clear. Cut must equal fill so that the total amount of open water stays the same. As far as maintaining the existing bays, however, I am undecided. The lagoons and islands concept has many virtues, and I will wait for further reports and community input before deciding.

## From Aldermanic candidate Lynne Kent

I feel very excited and positive about the Concord Pacific concept for the North Shore development. The planning process that has been underway for sometime is a good one and I anticipate a great deal more public input as we go. There is an important opportunity for the city to benefit from the experiences of the South Shore. Participation and input from False Creek residents is essential and should be actively sought.

Specifically on your questions.

1. Densities-I am pleased to see that they have been reduced from the original proposal but think they are still high.

Housing-We must address the special needs of seniors, single parent families, the handicapped, renters and social housing in a mix that provides a good balance of housing opportunities for all income levels.

2. Views-one of our most precious resources that must be protected and expanded.

3. Water area-We must minimize any significant narrowing of the major basins of the Creek and need first to ensure that the canals concept would bring greater benefit than the wide False Creek. The water quality of the Creek is an ongoing concern. We must speed up the programs for improvement.

4. Open Space-Neighbourhood park space of 2.75 acres/1000 population is an absolute minimum and must exclude waterfront walkways and questionable public space, such as parking. It must be 2.75 acres or more of quality park and open space. Access from adjacent communities is critical and a continuous waterfront walkway a must.

## From Mayor Campbell & the NPA

1. The NPA has reduced housing densities from those previously proposed by the City. The neighbourhoods on the North Shore of False Creek must be liveable, urban neighbourhoods.

2. Views are a precious resource to all the City. The view study being proposed will give the public an opportunity to have input into the views **to, through and from** the North Shore of False Creek.

3. The water area of False Creek was firmly established with legally binding agreements in the Fall of 1987. It will be maintained. The False Creek basin is an asset for public enjoyment which will continue to contribute to the special sense of openness, light and liveliness of the neighbourhood.

4. The key motivators of any redevelopment will be housing opportunities and public amenities. At least 50 acres of park will be provided, as well as community activity spaces. Public access to the waterfront has been secured for the first time in the City's history.

In summary, the North Shore of False Creek will be an example of a humane, top-quality urban environment where people will want to live, work and play.

## From Vancouver Civic New Democrats

The Civic New Democrats are very concerned about the present Council's lack of proper planning for Pacific Place. It is outrageous that the heart of Vancouver can be sold to the highest bidder with so little direction from our Council, and so little voice for Vancouver's residents.

1. The City must negotiate an equal mix of housing for Pacific Place: one-third subsidized housing, one-third middle-income housing and one-third upper income. As you know the present plan would allow an 80% "executive class" rental market.

2. We are opposed to 35-storey buildings blocking out the skyline of Vancouver. A view of the mountains is part of the heritage of our city. We would not see Vancouver turned into another Toronto-style wind tunnel. We would protect the valuable views and air space of other residents.

3. We oppose any further in-filling of False Creek, and we would like to see a full environmental assessment before accepting the proposed marina for 750 more boats on the Creek. So far the City has failed to enforce boat dumping regulations, leaving the Creek open to pollution.

4. The proposed park land for Pacific Place is insufficient and poorly placed (on toxic land). Council has underestimated the park use, particularly since they are advocating high density housing in the newly designated Downtown South area without significant parks to match. People will be drawn to the water, but find no facilities at Pacific Place.

In general Civic New Democrats feel the Victoria Soeds have rammed Pacific Place down the throats of the current residents without due democratic process. If elected we will put on the brakes, open up the planning process to groups such as the False Creek Community Association, and make sure the former Expo lands become a liveable part of the city, properly integrated with a human-scale vision of Vancouver.

## Make a Point to Vote

Saturday,

November 19

8 a.m. to 8 p.m.



For Alderman  
Sat. Nov. 19  
ELECT  
**LYNNE KENT**  
Experience  
and  
Leadership  
you can Count on  
NPA

MARK ONE VOTE FOR  
**ALDERMAN HELEN BOYCE**  
THE CANDIDATE WITH AN UNMATCHED 16-YEAR RECORD

**ALDERMAN,  
8 YEARS**

PARK COMMISSIONER - 6 YEARS  
SCHOOL TRUSTEE - 2 YEARS

THIS "GRANNY POWER"  
WORKS FOR

- Environmental Protection
- Recycling Program Expansion
- Family Strength Programs
- Children's Safety, Quality Care and Housing
- Seniors' Housing Options, To remain in their own Neighbourhoods!
- Racial Harmony
- Chairman Ethnocultural/Race Relations Comm. of Council

FOR EXPERIENCE: INTEGRITY: ENERGY: IDEAS  
A "TRULY" INDEPENDENT VOICE

VOTE

FOR ALDERMAN

**BOYCE, HELEN D.**



Judy Glick called to say Fraser Valley Produce, the Blue Parrot and Stuart's Bakery are sponsoring a

**COFFEE PARTY**  
in the public seating area next to the Blue Parrot

**THURSDAY, NOV. 17  
10 a.m.**

for the public to meet  
Aldermanic Candidates  
**LYNNE KENT**  
and  
**SANDRA WILKIE**

**On Politics**

It takes an elegant lady like **Carole Taylor** to bring a touch of class to the forest of election signs. Her tastefully designed banner adds a touch of colour these drab November days.

It's well known she thought long and hard before deciding to run for Aldermanic office again.

Whilst we cuss our City Councillors a lot, despite the grandstanding and bickering, most of them work hard if not always as effectively as we think they could.

Women can be as cantankerous as men sometimes, but on balance they probably "politic" less and thus have more time for real work.

Carole Taylor sees one of her roles is encouraging more women into civic politics and reaching out to help them get there. (Her banner somehow symbolizes that). She's struck by their response when they see her City Hall pile of pink slips—telephone calls to be returned: "You've got to have some help with those."

Politicians always tout their political longevity as reason enough for their re-election and not many exit voluntarily. Candidates recommended for the City Hall EXIT door are not listed here, but it is time some of them went to make room for a few of the good women lined up at the ENTRANCE. Amongst all the talk about preserving a liveable city, better representation from the distaff side might better ensure that.



**From The Editor's Desk**



**Conversation with Conford**

It was flippant to refer to last month's meeting as a "Rap with Rick" session (Richard Hulbert, Chief Architect for Pacific Place) but that's exactly what it turned out to be.

It was a session that should be used as a model and if it had been possible for some Official People to be flies on the wall it would have been a valuable education.

There was none of the stuff that happens at public meetings—no them and us, no confrontation, no official positions, no political positions or motherhood statements, no whining and blaming (well, a little blaming.)

Just a group in a circle in a small living room. Two people from the Concord design team and a handful of long-time False Creek residents who care a lot about this place they've chosen to live in and care enough to continue trying to make it work.

(For make no mistake, you have to keep on working at a community just as you do a marriage or a family).

Rick Hulbert acknowledged he was amazed, and impressed, by our willingness to talk about the nitty-gritty of what works and what doesn't, for the sole purpose of helping those charged with making a community on the North Shore do a good job of it.

Although people talked from their own experience and observations as Creek dwellers, the value was that their comments were made in the context of community, not from any position of personal investment. (I promised him that and suspect he didn't believe it beforehand.)

There are so many pieces to any development puzzle it's almost impossible to get it all right (who has had a house built or renovated PERFECTLY and problem free?)

**Thoroughfares**

One feature than can be done properly in Pacific Place is the design of each thoroughfare. Is it for people, for private cars, for delivery vehicles, for fire engines and garbage trucks, for bicycles? Is it for two or more or all these? Whatever the decision, the design must make it crystal clear and manageable.

Failure to do so breeds only confusion and resentment. We have a lot of that on the South Shore. We could all behave better in False Creek but we can't fix it now.

We beseeched Concord not to land their occupants in the same soup.

**Courtyards**

We had interesting discussion about inner courtyards. Alder Bay Coop opted for an inner garden and banished the tot lot to the edge of their territory. I live in a complex whose courtyard was designed to be seen, not used, certainly not played in. We have small children, and a by-law forbidding them to play in it. Next door is Marine Mews, with a courtyard designed to be a safe and welcoming place for small children, which thus encourages a sense of belonging. Mothers chat over coffee whilst toddlers play (and even small pets romp) and on Hallowe'en, they gather for a modest firework display.



Public meetings are vital and we value the institution, even though they are often scenes for statements not dialogue. I'll side against developers any day but also acknowledge they must go into public forums with stomachs knotted, defensive, expecting to be tarred and feathered.

There's a long way to go on Pacific Place.

There's so much to be learned

**The Creek**

Published monthly on the 15th of every month

Circulation: 5000 in False Creek, Fairview Slopes, and Granville Island

Publisher/Editor: Beryl Wilson

Mailing Address:

**The Creek**  
c/o False Creek Community Centre  
1318 Cartwright Street  
Vancouver, B.C. V6H 3R8

Mail Subscriptions: \$12/year

FOR ADVERTISING and FLIER DELIVERY RATES  
Call 734-3369

from the South Shore experiment that could be invaluable to planners/engineers/developers/politicians far and wide. Documented, it would make livelier reading than planning reports and treatises. It would take time and energy to gather the various small groups (including three ages of kids' groups) and humility for "experts" to learn from everyday people. And I have a living to earn; I've done my bit.

*Happy Birthday*

**FALSE CREEK REALTY CORPORATION**



**EMILIA NAYMAN** SALES REPRESENTATIVE & **JANA K. PLATTIG** PRESIDENT

Jana Plattig, President—False Creek Realty Corporation proudly announces the 6th Anniversary of happy and successful service to our many clients and neighbours in False Creek/Fairview Slopes. We greatly appreciate the patronage and support which makes this 6th Anniversary such a happy and successful occasion.

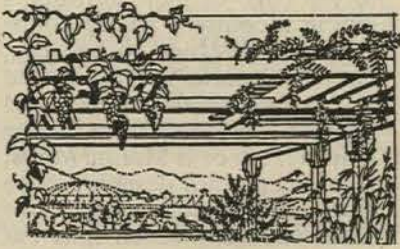


**FALSE CREEK REALTY CORPORATION**  
678A Leg In Boot Square  
False Creek South Shore  
Vancouver, B.C. V5Z 4B4  
872-6661

# The Rooftop Gardener's Notebook

## Urban Reflections

by Susan Baker



Do you know that we have a great deal in common with Spain?

Did you know Cordoba has an annual patio contest? That Spanish roof gardens and balconies look just like ours with all the same geraniums and pelargoniums drooping through the railings? And that our temperatures in the months of September and October are very much like those of the Spanish cities of Madrid, Toledo and maybe even Cordoba?

Further south in Grenada and Seville, you see Bougainvillea and Jasmine drooping over the wall and in the case of the latter, smell the fragrance before you see it. I think some of the romance of mediterranean countries comes from their smell, both the fragrance of unfamiliar and exotic food preparation and the smell of tropical plants. (The smell of traffic exhaust fumes in European cities is also memorable but less romantic).

It is very pleasant outside in the cities of Spain. It is very pleasant being on the street or in a plaza or courtyard; perhaps less pleasant than in England to be in a park, but then the trees are different enough to be inter-

esting and that takes one's mind off the bare soil on the ground.

I found, for example, that "lawn" can be a two dimensional concept, if you like, an elevation rather than a plan view. The lawn consists of individual blades of grass in a carpet of soil and only looks like a lawn from a distance. Up close it appears newly seeded—which it's not—and the ratio of open soil to green is 10 to 1. Nevertheless, the urban parks of Madrid valiantly strive for a collar of lawn to create the image of freshness and civility in an otherwise hard landscape.

Madrid, of course, has enough civility to eschew lawns altogether and this comes from being a walkable city.

**What makes a city a walkable city?**

**... is ours a walkable city?**

The trouble with travel is that it makes one very aware of the deficiencies of one's hometown. Even though I come from generations of West Coasters and have a totally irrational passion for Vancouver, I feel aggravated that Vancouver is not now, and may never be, a walkable city.

It is not simply a matter of size. We think our city centre is compact, but in fact the Vancouver centre peninsula is quite spread out when you consider the destinations within it and their relationship to one another.

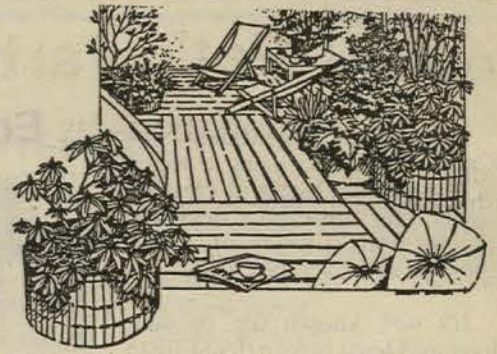
It could be a pleasant enough excursion to walk from False Creek to English Bay and back if there was a cafe/bar or two along the way; along several ways actually.

Similarly, a stroll from the Slopes over the Cambie Bridge to Gastown, along Pacific Boulevard, with a pause for tapas and a small beer at some stand-up cafe/bar near the Stadium might be nice. (One needs a small beer when one looks at the Stadium from Pacific Blvd.)

On the other hand, the city is going to intensify in concentra-

tion within the bounds of False Creek and Burrard Inlet and become a more interesting pedestrian environment because of the numbers of people on the streets. People provide the incentive for destinations like shops and cafe/bars to spring up.

Destinations can be other than "big bang" events such as Stanley Park. Destinations can also be activity pockets like the "street" of Robson Street where the opportunity for watching people is premium. Lest anyone mistakenly think it is the shopping that makes Robson "hot" I would argue that it is the tradition of drifting up and down Robson-strasse in search of the illusive European-quality streetlife that began there before the war. Remember that Robson has been threatened several times in the past with big schemes for change, either by covering it over (that may crop up again) or increasing the traffic flow.



## Death by Gentrification

I am still concerned about the future of Robson St. I think that the European quality is gone, dead by gentrification. What we have now is a variety of pretty little shops that are nice to look into and a few food shops and small restaurants to serve more basic needs as one tours the street. However, the food shops are hard pressed to remain with new owners wanting to cover their investment servicing costs.

It is the same all over the city. Corner stores, deli shops, confectioneries and tiny coffee shops are disappearing as the sites they occupy are turned over to a "higher use". And so small destinations that contribute to a walkable city disappear and are replaced by franchise stores.

I just can't excited over the a Mac's Milk where Galloways is now. It's not the same, and it doesn't smell as good.

**LAUREL**

PRESCRIPTIONS

#102-888 WEST 8th AVE., VANCOUVER, B.C. V5Z 3Y1

873-5511

### PRESCRIPTION & MEDICAL SUPPLIES

- Drug Information & Free Prescription Delivery
- Rental or Sale of Crutches, Walkers, Wheelchairs, Breast Pumps
- Sigvaris and Support Stockings • Diabetic Supplies
- Fast, Friendly Service

## YOU MAKE THE CALL!!



**GET CLOSE TO THE ACTION!**

Our interactive Satellite System lets you compete for prizes against bar stool quarterbacks across North America. Gain points predicting each offensive play call on live football telecasts.

It's fast, furious and free each weekend.

**Holiday Inn Vancouver**

Official Hotel of the U.B.C. Thunderbirds

711 West Broadway Tel. (604) 873-5711



## World's Worst Art Auction

Thursday, November 24

Robson Square Media Centre

6.00 p.m. Viewing 8.00 p.m. Dinner Dress Beautifully

What makes life worth living in this sad world of ours is the presence in our midst of unabashed lunatics—the Rhinoceros Party who add sorely needed humour to elections, satirists like Nancy White and the Double Exposure duo heard on C.B.C., and two local lunsies, Norman Watt and Bill Goodacre.

Norman Watt has long been Director of Extra Sessional Studies at U.B.C.; Bill Goodacre, since his retirement from City Hall, has worked part-time with the B.C. Paraplegic Foundation.

They earn their place in the Hall of Humour as perpetrators of the **World's Worst Original Oil Painting Exhibition and Auction** which is held annually to provide fun for the purchasers and funds for the Paraplegic Foundation.

The origins of the World's Worst Art Collection seem to be shrouded in the mists of time, and the location of the horde is known only to a select, trusted few.

This is, after all, a matter of some delicacy—presumably these works were executed in good faith and all seriousness.

For the second year the four winning works in the **Granville Island Garbage Can Art Contest** (which last year raised \$1500) are included among the auction items.

Painting purchases and two-thirds of dinner cost are income tax deductible.

The public is invited to preview the 'World's Worst' collection on Tue/Wed, Nov. 22/23, 11 am to 4 pm and Thur. Nov. 24, 11 am to 2 pm.

The Paraplegic Foundation's announcement reads: (letter in souvenir).

"In spite of everything that has been done, the 'World's Worst' is going to happen again—that's the bad news.

The good news is the Committee, by working diligently and late at night, has managed to keep the increase for the cost of this event to a minimum amount. Last year's price \$68.12, this year \$68.13.

Table sponsorships have decreased in cost to a now lower than ever \$600, for a table of eight, that means that you can now entertain 6 or 7 friends or enemies for less than what you would spend on a new Jaguar. The proceeds, except for the good time, go to help the 'people in the chairs.'

Hope to see you there, or as they say in the art world 'It is better to be scene than heard.'

Tables for eight, or, God forbid, single tickets can be purchased by phoning Lila at 324-3611."

If you need to know why a table for 8 apparently costs more than 8 individual tickets, phone Lila.



**Draw the line on crime. Give to the CrimeStoppers Fund.**

**CRIME STOPPERS**

Please send your tax deductible contribution to: CrimeStoppers of Greater Vancouver, P.O. Box 8686, Vancouver, B.C., V6B 4E2.

## Pat's Parting Present

\$300,000 for the Arts Club and Waterfront Theatres

Pouring rain didn't deter an astonishing number of local luminaries from filling the Waterfront Theatre lobby on Friday morning, November 4th, to hear retiring Vancouver Centre M.P. Pat Carney announce she'd finally prized \$300,000 out of the Federal treasury to contribute to the construction and renovation plans of both theatres.

The Waterfront Theatre has waited a long time. Pat Carney pledged support for it during her first bid for candidacy in 1979, the government changed shortly afterwards and she has worked to fulfill that pledge ever since. Despite the demands of holding ministerial office, Pat Carney has worked hard for the constituency, and it was with quite evident emotion that she made this parting gift.

The whole combined project involves renovations to lobby, dressing rooms, auditorium and the front, for the Waterfront Theatre (jointly owned by the New Play Centre and Carousel Theatre) and production/rehearsal facilities for both theatres.

To date Waterfront Theatre has raised \$60,000 and the Arts Club \$75,000 toward their respective dreams. The Dept. of Communications grant now qualifies the theatres for a \$75,000 B.C. Lotteries Fund grant and a City of Vancouver grant of \$130,000.



As New Play Centre's Pamela Hawthorne, Carousel Theatre's Elizabeth Ball, and Arts Club Theatre's Bill Millerd posed with Pat Carney, Bill quipped: "Have you got the cheque?" Her reply "No, but it's in the mail, I promise" brought a great roar of laughter from onlookers

It's a phased project because all this generosity and effort to date, totalling \$640,000, is not yet half of the estimated total needed: \$1,500,000.

The stamina, faith and sheer doggedness that people (most notably in the arts) display in pursuit of their dreams never fail to astonish. The noticeable, but very gradual physical improvements to the Waterfront Theatre over the years clearly have been hard won.

Pamela Hawthorne must have the constitution of a pair of Clydesdales to have confounded the early scoffers and nurtured the New Play Centre to 19 years of age and its rightful place as a valuable resource in the theatre world. It has produced over 100 new Canadian plays in these years. In January, with the assistance of a Canada Council Senior Artist's grant, she begins a well-earned year's leave of absence to rest and recharge the batteries, working with theatre companies in New York and England.

## Poor old St. Roch

Is this any way to treat a lady?

The poor old dear, in jeopardy again, needs another Major Matthews to rescue her.

Remember the hoofara in the 50's when this 'useless old wreck' as many saw her, was saved from the scrapyards chiefly by the sheer obstinence of the Major, Vancouver's unofficial archivist/historian? She was purchased by the City of Vancouver and dry-docked in 1958. It took a lot more civic agonizing before she got a house to keep her dry in 1966.

Presumably not much was known about the necessity of environmental controls in those days, because there are none. In the summer the staff are issued with shorts, it's so insufferably hot; in winter they freeze to death. What's not good for the staff is not good for the St. Roch. The planking is separating and she's evidently sinking—in her cradle, which desperately needs repair.

Even if Parks Canada produce \$140,000 for emergency repairs, the money will be poorly spent if environmental controls are not installed, and they will cost about \$1 million.

It's a Catch 22—when two families own a house, who pays for the paint? The City owns the St. Roch and its 'house' and receives the admission fees. It is administered by Parks Canada because it's a National Historic Site. Parks Canada finance the seven staff members who have a budget of \$20,000/year to cover maintenance, operation, uniforms, advertising, printed material such as brochures for school programmes.

The St. Roch is not only a vital part of B.C.'s and Canada's maritime history, it is a popular attraction. It averages 80,000 visitors a year, from 20 to 2000 a day.

If the City and Parks Canada are quibbling about who should pay the bill they should stop it and get on with the job. Rotting to death is not a nice way to go—and it's no way to treat an old lady.

NOTE: The City recently dug into its coffers to provide close to \$200,000 to Tourism to attract visitors to our fair city. They want to do more than sleep in hotel beds and eat in restaurants when they come.



Leona Lattimer

1590 West 2nd Avenue, Vancouver, B.C. V6J 1H2 (604) 732-4556  
Store Hours • 9:00 am-6:00 pm Mon-Fri • 10:00 am-5:00 pm Sat & Sun

## Thanksgiving Leftovers

by Elaine Sleath

They were just a couple of kids, teasing each other as young marrieds do, by almost-telling private incidents in public—but they changed my life.

Mod kids don't expect or care to teach old squares anything much yet it happened in a moment, inadvertently. Parents should take lessons!

Brian was lying on the floor, tickling his 6-months old daughter's bare tummy with his mustache. Abra (that's a name?) was

squealing her delight and eight indulgent relatives beaming approval when he said:

"Hey Margo! Remember when I used to make you tell me 12 Good Things you'd done each day before you got to eat supper?"

"Breathe, Margo, breathe," chorused the family. An old joke, obviously, but looking at me, laughing, yet indignant with memory, the pigtailed and slim Margo said: "Try it, it's hard!"

If God comes to us through people, and frequently through strangers, then God that day wore brief red shorts and a navy tank top and kicked his sandals under his chair.

But he had the remedy for depression for one square visitor with the old-age blues!

Try it yourself. It's HARD. But it works. You've no time for moping if you hope to eat! 12 Good Things before supper.

Bon appetit!

## ARTS UMBRELLA



Vancouver's Visual and Performing Arts Centre for young people aged 1 month to 18 years

REGISTER NOW FOR JANUARY

**VISUAL ARTS:** Painting & Drawing, Animation, Architecture, Video, Funky Fashion, Jewellery, Music, Papermaking, Photography, Sculpture, Writing

**THEATRE:** Creative Drama, Theatre, Jr. Performance, Sr. Performance, How to Audition, Musical Theatre

**DANCE:** Ballet, Jazz, Modern, Tap, Musical Theatre

**BROCHURE:** 681-5268 1286 Cartwright Street Granville Island

CAROUSEL THEATRE  
PRESENTS



CHRISTMAS  
CAROL  
A NEW MUSICAL!

Written and composed by  
Mavor Moore

The Waterfront Theatre  
NOVEMBER 24  
~  
DECEMBER 24

RESERVE NOW!  
685-6217

The  
BackStage  
Lounge

at the

ARTS  
CLUB  
THEATRE

The Best in R & B  
Friday & Saturday nights

Planning an office or Christmas get-together?  
—call us

Watch for our new Bistro — opening soon

687-1354

Next to the Public Market on Granville Island

Home of the Vancouver Scotch Club

# PRO-TECH

## Carpets & Upholstery Specialists



Professionally clean your carpets for the Christmas Holiday

Top quality work at low prices

Special	Upholstery	House Special
Living Room Dining & Hall	Chesterfield & Chair	Living Rm., Dining Hall, 12 stairs & 3 Bedrooms
<b>\$29.95</b>	<b>\$39.95</b>	<b>\$99.95</b>

- Fast Reliable Service
- No shrinkage or fading
- Fully Guaranteed

664 Leg-in-Boot Sq.,  
Vancouver, V52 4B3



872-7822

What do we live for if it is not to make life less difficult for each other

George Elliott

### An Information Meeting

will be held on

Thursday, November 24

in the

Granville Island Information Centre

at 6.00 p.m.

to outline the proposal to develop parking space under the Hemlock ramp

Neighbours adjacent to the site are invited to attend

Granville Island, Vancouver's urban park, developed and managed by the Federal Government.



## TWIN RAINBOWS

# RECYCLING PETITION

We the undersigned, members of Twin Rainbows Housing Coop, petition the City of Vancouver to instigate a city wide recycling programme to include curbside pick up of metals, glass and paper, within the next year.

Twin Rainbows has had a successful private newspaper pickup for a few years. Members feel that we should do more for our environment by implementing "The Blue Bin" programme that has been so successful in Delta and Toronto.

We feel that we can no longer ignore the dangers of contamination to our environment, and feel that a waste management programme is a good beginning. We sincerely hope that you are of the same opinion and that you will work towards this end to expedite this project.

Of course our Civic political candidates will be talking about recycling and waste management during the election, just as the Federal candidates are. It's replaced motherhood and vies with Free Trade for top billing.

Canadians seem to like a lot of government—government to do things and force the other chap to behave.

But caring about, and taking care of, the environment is one area where every individual can change behavior and make a difference. And if we don't all wait "for Joe to do it", collectively we really can change the world.

It will cost—in thought, in time, in effort, in less convenience, and in money.

We could do with more discussion of the revolutionary idea

of not making so much garbage, but more on that later.

For now, let every other Co-op and Strata Council in False Creek send a similar directive to City Hall for its tentative efforts to date are pitiful. A six week old, six-month experiment for 4500 homes in two east side neighbourhoods (paper collection only) "to see if the public is willing to participate and willing to pay for it."

Rogers Cablevision videotaped the day-long RECYCLING CONFERENCE held at Robson Square last month. It will be aired on Tuesday, November 22, starting at 3 p.m. Watch it if you can, especially the beginning, where a Florida Senator discusses some very tough Florida legislation and practices.

## Typos and Traumas

Have you ever looked at an article in The Creek and wondered: Why did she decide to do the rest of that paragraph in small print—or italics, or small bold letters, or (even worse) large bold letters?

The answer is she didn't. They're accidents; one small slip on the keyboard, but when the typeset galleys arrive back for paste-up, it's too late. Chopping, patching or shrugging the shoulders are the only choices.

The Creek staff (who, as you know, are all one person) still aims for better organisation and less crises, but now knows surely as one month follows another, though the source and nature of each month's glitches are unpredictable, that they'll happen is guaranteed.

To the frequent question "How do you put all that together by yourself?" the plain answer is "With difficulty—and hard work." The last enquirer thought the answer very funny, and that a **How it all gets done** article would be interesting. It might—'twould also be more hard work (and NOT fun) writing it. So it's on the not-likely-to-get-done list.



## From the Mailbox

Dear Editor:

I am the rather damp person who spoke to you at the Garbage Can Art Contest last month and mentioned how much, as a Slopes resident, I enjoy reading The Creek.

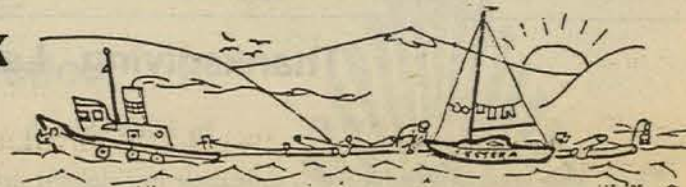
The October issue was of particular interest when I noticed the picture of Bill and May Tarbut at the bottom of p.6. In November I will return to Maui for my annual reunion with dear friends there, including a lovely couple whose summer home is in Anacortes, Wash. Every year I hear from them about their very dear friends, Bill and May Tarbut of Coquitlam! (whom I've never met).

So while the picture itself meant nothing to me, the caption underneath certainly did and I thought you might like to know that the October issue of The Creek is going to Maui in November. Mary Kingston 7th Avenue.



Letters from Friends

Some of them contain gems good enough to share; these from two Saltspring Island friends.



We spent August on the sailboat, swimming, exploring, tying up to log booms. Have to watch that—tugs will tow the booms away without warning and boats securely tied for the night often awaken to find themselves miles away. Even worse is to watch your boat disappearing as you stand on shore.

It was while we bounced against one boom that Geoff arranged his contract for the job in the Queen Charlotte Islands again. The small miracle is that the letter arrived at all, for finding a post office was an adventure.

"Post Office" doesn't quite describe it. In a nearby bay some water nymphs, diving into the waves from a wharf, directed us up a country road, where a delightful couple offered us a drink in their garden. We chatted for an hour and they undertook to give our letter to the postman, who would "be around in 2 or 3 days." Which they faithfully did, because a week later when Geoff

because a week later when Geoff located a telephone he learned he was hired.

I was glad to be working full-time-plus with Geoff away. Only Jed didn't like the arrangement. Lonely, with no-one at home, he took to patronising the local pub where he soon became a fixture, taking care to arrive home in time to greet me as if he had never been away. It was some time before I learned of this routine and by then my reputation was destroyed; EVERYONE, it seems, knows whose dog he is.



From an ex-West Vancouverite friend now on Saltspring Island

"My afternoon a week at the library continues to be a source of enjoyment to me. I have been promoted from merely STAMPED BOOKS, IN and OUT, to being the boss of the INS and OUTS sometimes, which means I am allowed to register new members, answer queries and take out the garbage!



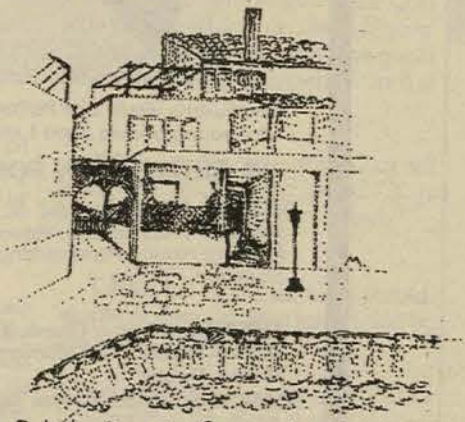
### PLEA TO PARENTS

Your children will never learn to speak decently grammatical English by listening to radio and watching TV. PLEASE tell them to wag a "That's WRONG" finger every time they here that appalling

"You did good."

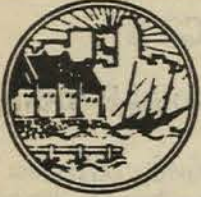


First come,  
first served  
if you're planning  
to have your  
Christmas guests  
stay at B's place



...on the False Creek Seawall...

Tel. 734-3369



## Community Centre Notes

by Rick Thaddeus

Congratulations to all the new Board Members elected at the A.G.M. False Creek is lucky to draw such capable directors.

Sheila Foley, Bill Pultz, Patrick Couling, Kelley Lapensee, Doug Alexander, Gerry Beltgens, Angela Keene, Catherine Kinny, Adrian Lee, Anthony McCord, Sherry Phillips, Carole Roach, Rick Taylor, Rob Varnel, Mary White

The new Board's first task was to appoint **Sheila Foley** as the new President. However that doesn't stop **Nancy Nattering**. In her new role as Past President Nancy McWhinney will continue to chat to one and all in the lounge on Sunday afternoons.

When **Rachel Green** broke her leg she took to knitting, which leads her to the Craft Fayre where her exotic socks will be on sale. Come early.

### Christmas Craft Fayre

Yes, it's that time of the year again when long line-ups at the malls are common sights. You can avoid them by shopping for special stocking stuffers, decorations, ornaments and lovely gifts at the False Creek Community Centre Christmas Craft Fayre on

**SUNDAY, NOVEMBER 20**  
10 a.m. to 4 p.m.

Refreshments will be served and even child care provided.

#### Admission:

25¢ for Seniors & children, or \$1.00 for the whole family. Call 688-9478 for further information. 50¢ for adults

False Creek Hallowe'en events were well attended this year. All were held on Friday, Oct. 28th, starting with the Preschool Hallowe'en Party in the morning where 34 children made it a festive one.

The Children's Hallowe'en Carnival in the afternoon was colourful with costumes ranging from E.T. to Bat Man. The day ended with the Monster Mash Dance in the evening. Kids came from Mount Pleasant to Bayview to join our Creek kids and needless

to say, everyone had a monstrously good time.

The Community Centre would like to thank the following for their donations of prizes and refreshments for the Hallowe'en events.

**Safeway, Chuck E Cheese, Sky-line Sports, Community Sports, Fogg N'Suds, Pizza Hut, Red Robbins, DD Delicious Donuts, Cheng's Diner.**

Thanks to all who came in such creative and fun costumes.

### COMING SOON

#### Thur. Nov. 17-NUTRITION and FITNESS

A talk in the CREEK A.M. series aimed at older adults.

by Lori Donald and Shefali Raja, Dietetic Interns at V.G.H.

**Sun. Nov. 20-Christmas Flyer out.** Information on Santa's Breakfast, Lights Tour, Workshops, Kids activities. Pick it up at the Christmas Craft Fayre

#### Tue. Nov. 22-VOLUNTEERS AND THE LAW

The responsibilities of a volunteer Board of Directors by the Public Legal Education Society. FREE, but please register.

**Wed. Nov. 23-7.30-9.30 p.m.-CROSS COUNTRY SKIING** A talk by Benno's on equipment, safety, diagonal stride, downhill glide, stay off your backside, etc. FREE.

#### Thur. Nov. 24-10.00-11.00 a.m.-WILLS

A talk in the CREEK A.M. series by a Vancouver lawyer.

### Cooking

**Wed. Nov. 23-7.00-9.00 p.m.-QUICK AND EASY COOKING** Oriana's nutritious, delicious 30-min. meals (inc. dessert). \$12.00

#### Wed. Nov. 30-FINGER PICKIN' FOODS

Foods for great grazin'. Stuffed wonton, artichoke bottoms with Cajun shrimp etc.

## Seniors' Scene

by Marge LeGresley

Our meeting on November 2nd was fairly well attended (22 members) considering the dismal weather. Nevertheless many important matters were dealt with, including the following special dates to be noted.

#### CHRISTMAS CRAFT FAYRE

**Nov. 20-10 a.m. to 4 p.m.**  
As well as our usual tea-room service we are holding a Bake Sale so we are asking all of you to be doubly generous with your donations of baked goods. Many of you have already volunteered your help on various duties but for those who were not at the meeting, Ann McArthur will be pleased to take your names.

#### "A CHRISTMAS CAROL"

First night at the Richmond Gateway Theatre on **Friday, Dec. 9th.** Jean is arranging for a bus to take all of us and the cost is \$9.75 plus bus fare (to be announced later).

#### CHRISTMAS LUNCHEON

**Friday, Dec. 16 at 12 noon**  
Fully catered by Tiffany's and costing \$14. Register now and bring a friend for the start of the festive season.

#### CHRISTMAS MOUNTAIN EXPERIENCE

For those of you who missed the weekend in November this is your opportunity to enjoy a wonderful Whistler weekend get-away. Full details are posted at the Centre and leaflets are available there. Weekend of Dec. 12/13/14.

#### NEW YEAR'S EVE PARTY

**Saturday, Dec. 31st.**  
Catering arrangements will be discussed at our December meeting, but book the date now as this is a tradition always enjoyed by everyone.

#### SENIORS' LOTTERY

The sale of lottery tickets is our first fundraising effort—proceeds go to the new Building Fund. Books of tickets are available at the Centre (\$2 for single tickets; \$10 for a book of 6). There will be a table, first at the Craft Fayre, later in the Granville Island Market, from Nov. 24 to Dec. 4th. If you can volunteer to sell tickets, please give your name to Rose Inglis (738-7213).

Our first Pot-luck supper on Nov. 4th was a great success with many varied and delicious dishes. Everyone enjoyed the Bingo game which followed and thanks are due to all the willing helpers.

At time of writing I cannot report on the Mystery Tour arranged for Nov. 10th, but Jean tells me we are sure to enjoy Lyle's plans for the outing.

I should mention the misleading picture published in the West Ender recently. It was embarrassing for Betty Carson, who is not our President-YET! However, Annie Hassell's smiling face in it the following week was good to see—glad to have you back bowling with us again Annie.

Best wishes for a full recovery to Vi Lewers—hope to see you out and about again soon.

### Hallowe'en at the Wellington



The Wellington Building has a resident witch. She's **Margaret Makinen** who, every Hallowe'en, greets goblins and other characters at the hall door where Managers **Harvey & Betty Wood**, here helped by **Eunice Pearson**, hand out goodies. They made up over 100 bags this year.

We also learned the Woods hold an Open House in the lobby every Christmas, greeting work weary residents with toddies and treats. We'd like to hear if other buildings do this. (734-3369).



### Oriana Baldasso

Specializing in healthful gourmet cooking and catering for today's busy, health conscious people

Caters small dinner parties

Prepares attractive international "starter kit" gift baskets for Christmas

#### Planning a Party? — Be different

Order Oriana's

— Vietnamese salad rolls with hot peanut sauce

— Satays

— Mango banana salsa dip

Phone: 734-5328

## ISADORAS

COOP RESTAURANT



WEST COAST  
FRESHNESS  
NATURALLY 681-8816

AT THE ENTRANCE OF GRANVILLE ISLAND, JUST PAST THE KIDS ONLY MARKET, TURN RIGHT.

## CLASSIFIEDS

20 words: \$4 (min.) 30 words: \$6  
 Deliver copy to Creek mailbox  
 at Community Centre by 8th of  
 month. PAYMENT MUST  
 ACCOMPANY ad.

## FOR SALE

"Arabia" dinnerware—brown and  
 some white/brown-rimmed. Din-  
 ner, salad & side plates; 3 cups/  
 saucers. Tel. 734-3369

## ACCOMMODATION

## FOR RENT

Spacious fully furnished view  
 apartment. Five mins. walk from  
 Public Market. Easy bus access  
 to downtown or U.B.C. Avail.  
 JAN. & FEB. No smokers please;  
 no pets. Tel. 733-6562

GOING ON CHRISTMAS  
VACATION

Senior citizen couple (my par-  
 ents) would love to rent or  
 housesit your False Creek area  
 apartment/townhouse for the  
 period from Dec.15-Jan.8 or a  
 portion thereof. Guaranteed re-  
 sponsible, non-smokers, plant  
 lovers. Please phone 873-1763 after 6  
 p.m.

CHRISTMAS  
ACCOMMODATION

Attractive one b.r. apartment  
 avail. from Dec.11/88 to  
 Jan.15/89. All amenities. Non-  
 smokers only. No pets or children.  
 South Granville area.  
 Tel. 734-2011 (day) or 731-6773  
 (evenings).

## HELP WANTED

Substitutes needed for the False  
 Creek Afterschool Program at  
 the Community Centre.  
 Please call 689-5977 between  
 2.00-6.00 p.m.

**OVER THE RAINBOW**  
**Granville Island**, is looking for a  
 part-time playroom assistant to  
 work with children 2-4 yrs. old.  
 Mon. & Fri a.m. Possibly Sat.  
 Call Barbara at 683-2624

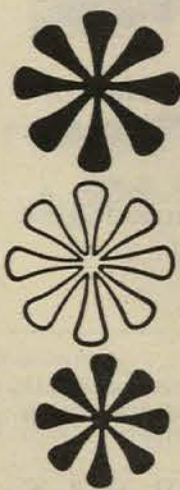
WELCOME WAGON  
OPENINGS

Established service has part-time  
 openings. Position requires use  
 of a vehicle and typing. Suitable  
 for community minded person.  
 Volunteer experience an asset.  
 Call 685-9010

**CREEK HANDYMAN/  
 GARDENER**  
 Bob Holden  
 732-7123

## LOST

Left at the top of Shore-  
 pine Walk last week—black &  
 white sweater. Label: Club  
 Europe.  
 Finder please call 736-0874.



## Great Entertainment Ahead

## Musical Treats

Vancouver Chamber  
Choir

(now in its 18th season)

## I Hate and I Love

Friday, November 18. 8 p.m.  
 Ryerson Church, 45th & Yew St.

Twenty perfectly tuned voices sing  
*The Worcester Fragments*, from the  
 medieval era, a recently-discovered  
*Mass* by Brahms, Dominick  
 Argento's *I Hate and I Love*, French-  
 Canadian folksongs and a new set of  
 spirituals by Jon Washburn.

Friday, December 16. 8 p.m.  
 Orpheum Theatre

One of the glories of the choral  
 repertoire

**Bach's Christmas Oratorio**  
 with the Chamber Choir aug-  
 mented by the Vancouver  
 Chorale, and the Vancouver  
 Symphony Orchestra.

25 years later I can still remember  
 the magic of hearing this for the  
 first time, during a two-week Bach  
 Festival in Oxford, England, oblivious  
 to the discomfort of a hard church  
 pew from the first phrase to last.  
 If you miss this chance you may not  
 have another for seven or eight years.

Our choirs are paying attention to my  
 pleas at last. The Chamber Choir are  
 doing my beloved Christmas Oratorio  
 and the Bach Choir's conductor  
 Bruce Pullan is singing again. I'd  
 listen to him sing the telephone book  
 but what he's actually singing in is:

## Haydn's Lord Nelson Mass

which

## The Bach Choir

perform,

with the Vancouver Symphony,  
 Saturday & Monday  
 November 26 & 28

Orpheum Theatre 8.00 p.m.

The programme also includes  
**Brahms' Alto Rhapsody**

The Bach Choir, Chamber Choir  
 and the Cantata Singers, take it  
 in turns to perform

## HANDEL'S MESSIAH

This year is the Cantata Singers'  
 turn and theirs is always a very  
 crisp rendition. Soloists are  
 Julianne Baird, Catherine Robbin,  
 Glyn Evans and Kevin McMillan.

Friday & Saturday  
 December 2 & 3

Orpheum Theatre 8.00 p.m.

## Theatre Treats

## Arts Club Theatre

## It's Snowing on Saltspring

It's bound to be entertaining with  
 a cast that includes Nicola  
 Cavendish (you should see what-  
 ever she does) and Bernard  
 Cuffling.

## Only in B.C.

A zany musical lampoon of our  
 province, its people and  
 politicians.

Queen Elizabeth  
TheatrePeter Pan  
The Musical

starring an effervescent Cathy  
 Rigby, and Long John Baldry.  
 Lots of kids, lots of vitality, lots  
 of flying, and it's worth it just to  
 see Cathy Rigby dance through  
 the air. I loved it.  
 Five days only  
 November 23-27 Children \$10  
 any seat

And a PANTOMIME.

## Aladdin

December 14-18

Jeff Hyslop will be so appealing  
 as Aladdin all us middle-aged  
 ladies will want to take him home  
 (some not-so-middle-aged might  
 too).

Also starring Karen Kain, Ross  
 Petty and Bruno Gerussi, it  
 should be a perfect pre-Christmas  
 family outing. I'll be there on  
 opening night and will tell you  
 about on between carols on Dec.  
 15th

Tickets for everything are  
 available at VTC/CBO outlets.

Information: 280-3311

Amahl and the  
Night Visitors

by Gian Carlo Menotti.

Saturday & Sunday  
 December 10 & 11

Shaughnessy United Church  
 7.30 p.m.

It's a magical Christmas opera,  
 for children of all ages; a heart-  
 warming tale of a heroic young  
 crippled boy, his mother, three Kings,  
 thievery and miracles.

## LEFTY PRODUCTS

## Special Products for Special People

After reading, in the August  
 issue, the lighthearted chastise-  
 ment to McDonalds for using  
 imprinted spoons that can only  
 be read by right-handed people,  
 Fairview Slopes resident **Roger  
 Reid** wrote a letter opening with  
 the kind of compliment we never  
 tire of receiving:

"I am a regular reader of The  
 Creek and you do an excellent  
 job in keeping the people in the  
 area informed."

More importantly, describing  
 himself as a 'Lefty', part of 10%  
 of the North American popula-  
 tion with different needs, he told  
 us about **LEFTY PRODUCTS**,  
 a catalogue sales company deal-  
 ing in products designed to make  
 life easier for left-handed people.

Some are novel—T-shirts,  
 birthday cards opening from the  
 opposite side with appropriate  
 greetings for Lefties, buttons and  
 stamps—but most are useful:  
 scissors and kitchen knives of all  
 sizes and kinds

can openers & waiter's corkscrew  
 (surely a godsend)  
 measuring cups, ladles, a parer  
 & peeler set, pruning shears and  
 pruning knife  
 pocket knife, 12' tape measure  
 bridge sets, calligraphy sets  
 a sailpalm for sailors

**Books:** Left-handed knitting  
 Left-handed needlepoint  
 Left-handed calligraphy  
 Left-handed golf tips

and some humorous ones like

**The World's Greatest Left-  
 handers**—achievers, heroes and  
 scalawags, from Joan of Arc to  
 George VI and Charlie Chaplin.

The company recently opened  
 a store at 3432 Cambie St. (next  
 to the Park Theatre) which  
 carries most of the catalogue's  
 products and many others to  
 make life more comfortable for  
 people with physical limitations,  
 especially arthritis sufferers. In-  
 cluding the latter has endeared  
 them to physiotherapists and  
 occupational therapists for life.

Back at the wretched compu-  
 ter after a quick trip to see the  
 store this rainy Saturday, I'm  
 massaging the pressure points in  
 my feet on a marvellously engi-  
 neered **Roll-o-Flex** I bought  
 there. Included with it is a chart  
 illustrating which points in hands  
 and feet are connected to the  
 various body parts and problems.  
 It may be the best good-to-me  
 \$30 I spend all year.

The inspection visit was worth  
 it for one item alone and after  
 Christmas I want to hear that  
 some lady, who is cursed with  
 having to use a cane, found under  
 the Christmas tree one of the  
 loveliest presents a thoughtful  
 husband or offspring could  
 buy—a beautifully elegant, floral-  
 patterned walking stick.

Whoever was inspired to make  
 such a tedious necessity into a  
 fashion accessory deserves a  
 Meritorious Award.

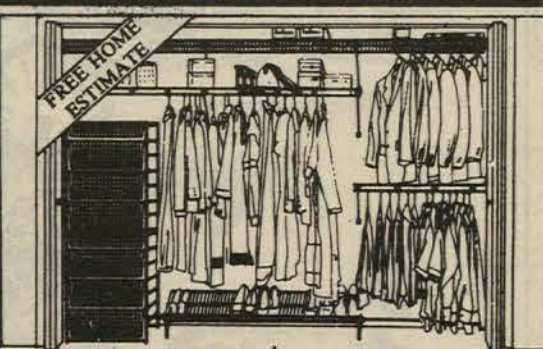


Friday, December 9  
 6.30-7.00 p.m.

Bundle yourselves and kids up  
 warmly, pack a thermos of hot  
 coffee, and walk over to  
**VANIER PARK POND**

The West Coast Model Boat Club  
 gussy their boats up with teeny  
 lights and hold their own Carol  
 Ship Parade on the pond. It's a  
 charming event.

Why we are #1 serving  
 the Lower Mainland



- Specializing in ventilated shelving and European basket systems
- Our ventilated shelving is cleaner and more efficient than conventional wood shelving
- Call today for Free Home Estimate

**interior  
 design  
 warehouse**

Visit our showroom  
 858 W. 6th Ave.  
 Vancouver  
 874-5715  
 Mon.-Sat. 10-6  
 Sunday 12-5  
 Free Parking

NOW  
 25th  
 YEAR  
 SERVING  
 VANCOUVER

**McIVER'S**

APPLIANCE SALES  
 AND SERVICE

854 WEST 6TH AVE

Huge Selection  
 of Rebuilt Appliances  
 and Parts

FULL 1 YEAR WARRANTY  
 ON REBUILT APPLIANCES

We do housecalls  
**879-5222**

1st

Quality  
 Service  
 Dependability

the  
**Woodshed**

FIREWOOD • KINDLING



585 West 7th  
 1/2 block west of Cambie

OPEN

SATURDAY  
 9:00 - 5:00

BY THE TRUNK LOAD!!!

879-8800