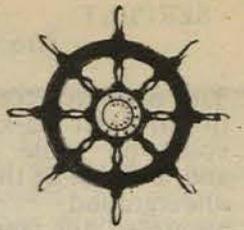
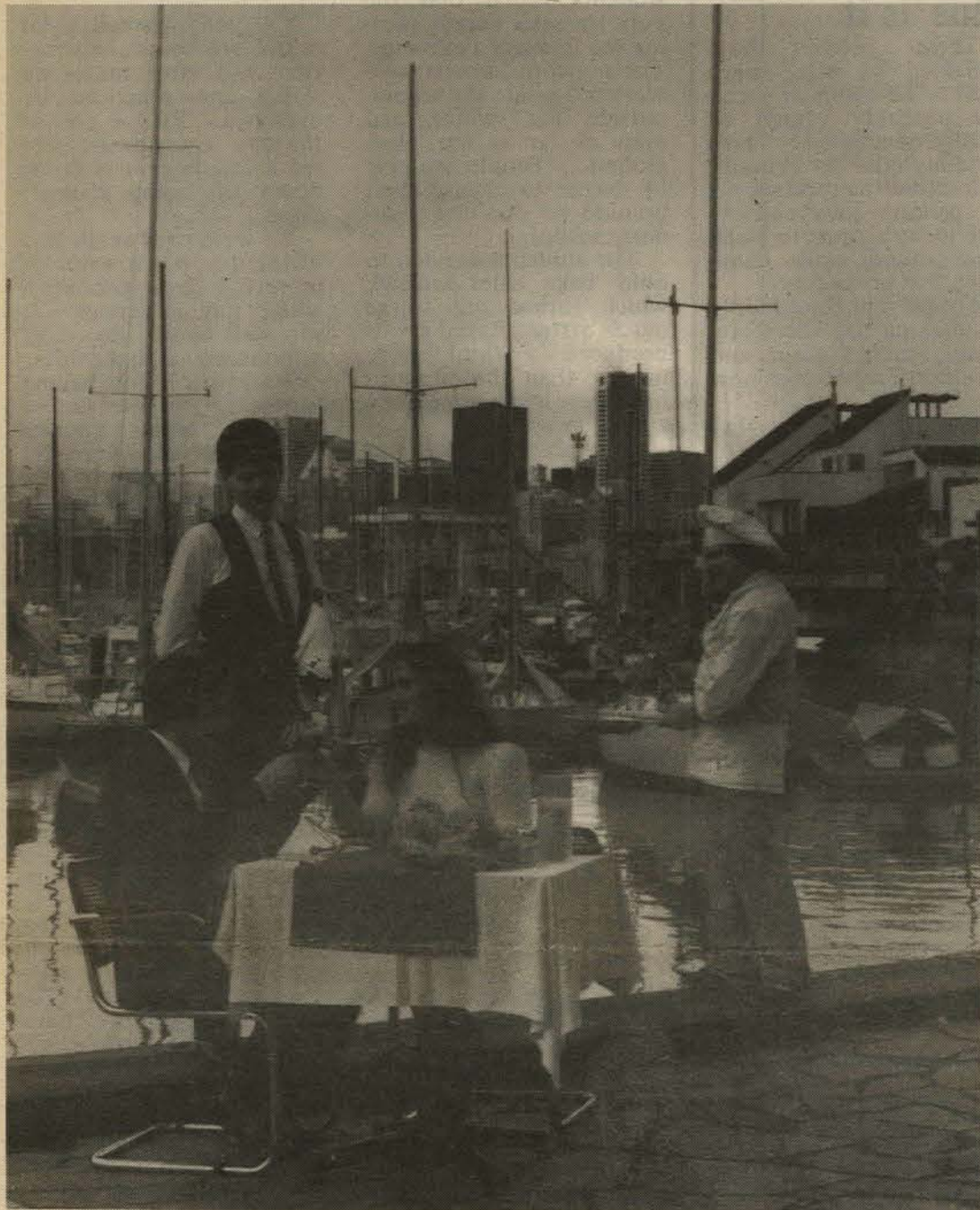


The Creek



SPONSORED by the Community & Recreation Associations
Circulation: 4000 in Granville Island, False Creek & Fairview Slopes

MARCH 1984 VOL. 3 NO. 2



HOW FRESH IS THE FISH?

Straight off the boat, if not out of the bay outside The Trestle,
says Chef Jacques Rodrigue.

A SERPENT IN PARADISE

That's how the endless, insoluble problems of traffic and parking in False Creek might be described.

The Traffic Committee's task list never seems to diminish. As soon as one item is dealt with and ticked off the top, another is added to the bottom.

The Committee is considering methods of reaching community consensus on the OVERNIGHT STREET PARKING issue. It decided some background is necessary.

The following article was prepared for The Creek by

CAMERON GRAY
PROJECT MANAGER
FALSE CREEK
DEVELOPMENT GROUP

If the average citizen were asked what might be False Creek South Shore's biggest problem the answer is likely to be "shortage of

parking". The problem of parking, or rather the lack of it, on the south shore is more familiar to its residents and many of you know its history. But for those who do not, the following is a brief summary of the history and of the parking policies currently governing it. Parking was provided in lower ratios than would normally be the case elsewhere in the City for several reasons.

When the project was first conceived in the early 70's, it was as the home for those working in the inner city. It was seen as part of a trend which would see the automobile supplanted, especially for trips to work, by transit.

This expectation led the architects of the development to believe that parking in general might safely be reduced and the need for second cars largely eliminated.

Another reason for reduced parking space was that the south shore was expected to provide public access and open space along the waterfront. In keeping with the traffic-free character of Vancouver's other seawall walkways, traffic was not to be permitted on or near the False Creek seawall. In fact, the priorities for the use of the False Creek South Shore lands were the provision of open space and parks, and the provision of housing with the emphasis on housing facilities.

The concept derived from these priorities was housing-in-a-park where most streets would be designed as extensions of the open space, traffic would be kept as far away from the waterfront as possible, and parking would be kept out of sight and preferably underground. (con't p. 2)

NOT QUITE VICTORY AT SEA - YET

by Beryl Wilson

Never underestimate the power of the people when they get their act together. The False Creek community did this last month when it found out B.C. Place wanted to relocate 94 boats from the False Creek Marina on the north shore to Heather Marina.

City Planning Department held an Information Meeting in the Netherlands space on February 29th, which turned out to be too small when a large group of False Creek Marina showed up.

Council deferred hearing the application from March 6 to 13th partly because of the number of delegations to be heard. In the intervening week City staff and B.C. Place got the message that community opposition was very strong and by March 13th, B.C. Place had reduced the request to moving only 22 live-a-boards into Heather Marina.

Facilities for the 24 live-a-boards already there are evidently inadequate now and the idea of doubling their community was not palatable, even if B.C. Place builds extra shower, toilet, and laundry facilities and provides extra parking space at the 6th Avenue lot. It would still

mean extra pressure on the Stamps Landing cul-de-sac which already has congestion problems we are unable to solve.

Added factors in this mess are that by 1986 we will have a 150 seat restaurant built out into the water to the north of the marina and residents of one of the large Imperial Ventures buildings will enter their garage from Moberley Road.

To our relief City Council recognized that False Creek South Shore is already taking considerable impact from the north shore development and that it might not be too jolly living a stone's throw from the Fair for six months. Council deferred decision until March 27th, admonishing B.C. Place to work very hard to find alternate sites for some, if not all, the live-a-boards.

There's still another problem. Part of B.C. Place's proposal is to put 70 boats on the Imperial site (where Imperial Ventures has approved to develop a 60 berth marina) but with access to it down Moberley Road. We will insist they negotiate with Imperial for access only through their site.

The play is not over, but it's in better shape than it was a week ago. More next month.

BOWLED OVER

An excited phone call from Eva Johnson just as we were going to press. "Our Carpet Bowlers just won their first tournament. We've entered so many and this is the first time anyone from False Creek has won."

Eight west side teams competed in the City Play-offs in the Pairs Tournament.

Our starring players are ROSE INGLIS and JIM GRAINGER who now go on to the Big Time - the Provincial Pairs Tournament in New Westminster, March 27 - 28.

We'll be rooting for you. (Eva said Jim was so "high" he had been walking briskly around the Creek for hours to calm down.)

NEIGHBOURHOOD NIGHT
with our Federal M.P.

PAT CARNEY

MONDAY April 2

Chalmers United Church
2801 Hemlock
7:15 - 9:30 p.m.



The Vancouver Youth Theatre's first major fund raising event at Isadora's on Monday, March 12 ended with organizers smiling.

85 people arrived for dinner and spent \$1530 bidding on 50 items.

Somebody got 6 cases of beer for \$30; A Mexican Dinner for six raised \$75.

The V.Y.T. kids did their bit too - two 12 year olds raised \$20 with their offer of 6 hrs. of baby-sitting (including making lunch and taking their charges on an outing).

No-one would admit to needing an hour of Marriage Guidance Counselling but the auctioneer eventually pried \$15 out of someone whose name we couldn't get!

Maureen Savereaux said she could afford (for her cause) \$30 for a sleeping back but was relieved when someone outbid her at \$35 - until she found out it was her daughter Bridget!!!

★ ★ ★ ★

SERPENT
(from p. 1)

This restricted the amount of on-street parking that could be made available and, because of the cost of underground parking, restricted the amount of residential parking that could be afforded. Only that amount of parking considered necessary was provided.

It is fair to say that the City's goal of housing-in-a-park has been successfully achieved. The hope that parking could be reduced without negative impact, however, has not been realized. How large the shortfall is and whether it could have been avoided without some of the successful features being lost is unclear.

What is clear is that some residents living in False Creek have been inconvenienced by not having as much parking as they would like and some visitors to the area have been inconvenienced by not finding parking, at all, or finding it some distance from their destination.

Given the experimental character of False Creek South Shore, it was recognized there might be a parking shortage and sites were set aside for public parking areas.

In 1979, two years after the first residents moved in, the City proceeded to develop these sites at Heather, next to the playfield and at Alder. At that time, the shortage was felt most keenly by visitors as the temporary parking areas were unrestricted and uncontrolled.

The decision was made to expand the total amount of parking and to install parking meters to ensure that a supply of visitor parking was maintained.

In 1980 the Alder and Heather public parking garages were opened, with 89 and 160 visitor stalls respectively. This solved the visitor parking problem for the most part, but did so by displacing residents' vehicles.

Shortfall

The residents most affected were those living in the non-profit rental projects * built under restricted budgets which allowed only limited underground parking to be constructed. In these projects the ratio of parking stalls to dwelling units was one stall for every two units. This proved insufficient to meet the needs of their residents.

(*Moberley Rd. apartments, Netherlands complex, Wellington apartments)

In response to this problem, in the spring of 1981, 24 stalls in the Alder Parking Garage and 17 in the Heather Garage were allocated to the Netherlands complex and Moberley Apts. respectively, raising their ratios to two stalls for every three units - still less than the one per home seen as desirable.

Only this many stalls were allocated for resident parking because of the experience with the shortage of visitor parking. At the time it was felt by City staff and the False Creek Community Association that on-street parking

should still be intended for visitors and therefore that the 4 - 6 a.m. no-parking restriction should remain in force. It was also felt that the remaining stalls in the public parking garages should similarly be designated for visitors and maintained for that purpose through the use of meters, which provide free parking during the evening but require overnight parkers to pay 25 cents an hour.

This is it

These policies have remained in place since 1981. The general shortfall probably cannot be wholly eliminated. There certainly is no opportunity to increase the total supply of parking inexpensively and today's costs to build underground stalls eliminates that possibility.

The present total supply of parking is, therefore, pretty much a given, and the question becomes how to allocate it.

The City requires that visitor stalls be available to service the city-wide amenities such as the Seawall and Charleson Park. Other than this, it is, to a large extent, up to the community to decide whether their visitors' or their own vehicles will have priority on the street and in the public garages.

A word of caution is in order. Oscillating between an emphasis on visitor parking one year and resident parking the next is to be avoided.

A balance must be struck which recognizes that the problem will never wholly be solved but which satisfies the basic requirements of visitors and residents alike.

THE SCHOOL COLUMN

Junior Editor: SALIMA ALANI

In the November issue of THE CREEK we told you about the weekly popcorn sales that Div. 1, Gr. 7, were holding to raise money for their spring skiing trip.

As weeks went by, the students found that the popcorn sales were becoming too much of a nuisance. The popcorn kernels were scattered inside the school, outside the school, and even as far as the playground. People walking by began to change their opinion of our clean, orderly school.

The students decided to hold bake sales instead, which turned out to be much better. Baked goods produced a third more money than the popcorn had; there was more variety and no mess.

Another good thing was that students participated more - they baked the cookies and cakes themselves. Even our Gr. 7 teacher, Mr. Fornika, contributed - he baked a batch of cookies every week and they were very popular.

By March 2 we had raised \$483, which was more than enough to pay for the skiing trip.



drawn by Ronan Boyle, Gr. 7

The weather was perfect for the Big Day on Mt. Seymour on March 7. We were able to ski without jackets.

The three instructors fitted us with equipment and divided us into Beginners, Intermediate, and Advanced groups.

The sunshine was great but the snow was VERY wet; even some of the better skiers fell down. The beginners were funny to watch. Some almost hid the splits; one almost hit a tree.

Everyone learned a lot in the two hours of instruction and after lunch we skied and practiced by ourselves. By the end of the day it was amazing to see a few beginners skiing down the steep chairlift slope.

We were tired at the end of the day, but it was a lot more fun than spending a whole day in school. It was well worth the effort of popcorn and bake sales.

We will continue baking and selling for the rest of the year to raise money for another Big Outing in June, which will probably combine horseback riding, roller skating, and go-kart riding.

We want to thank everyone for helping us make the WALK-A-THON on February 24 a great success. 251 students and 12 staff walked to Queen Elizabeth Park and back.

It's uphill all the way, so we soon forgot how cold it was, but it was dry, thank heaven.

Mr. Deane asked the community to make it good, and it did. Last year's walk raised \$1210, and this year we have raised \$1490, with a few pledges still to be collected.

We will be able to get the printer for the computer and have money for trophies, sports uniforms, camp fees, and other extras.

THANKS AGAIN, EVERYONE.



animal farm inc.
furniture for children

Most Creek readers know the name Roger Dahlquist because of the antics of the Great West Cannon Company.

It's not surprising that others equally imaginative and slightly insane gravitate toward him.

A few years ago, when the Sea Village community moored in Coal Harbour, a poet and a dreamer used to loll about under the summer's blue skies - and the influence of smoke and pleasant libations - fantasizing about a beautiful little company they would create. It would be called ANIMAL FARM and would make children's furniture with names like Cat's Cradle, Bear Chair, Rocking Dog, Caterpillow, Pelican Bag, Hippo Dresser.

One day, Riohei Kitamura, a Japanese businessman, who sailed with Roger whenever he visited, sat listening to the dreamers. He already had several very LARGE enterprises in Japan and loved the idea of having a "beautiful little company."

In short order he had several pieces designed and manufactured in Japan.

Sadly the trial shipment arrived in Vancouver just as the economy took a nosedive. Stores seemed to doubt there were enough extravagant grandparents who would indulge their favorite grandtots with one of these enchanting, but expensive pieces.

So there they sat, hidden, unloved, with Roger and partner Sylvia Rayer wishing they could at least recoup their friend's manufacturing costs and the storage charges.

The remaining Animal Farm inventory consists of

6
BEAR CHAIRS



\$190

The fertile imagination never rests though and it wasn't long before another idea evolved to find happy homes for the menagerie.

6
ROCKING DOGS



\$190

One of Roger's Sea Village neighbours, Gordy Fleck, bought a Bear Chair and donated it to the Children's Hospital. A second one at the hospital sports a plaque "dontaed by the Rose and Thorne Pub" (a watering hole conveniently adjacent to Rogers place of employment).

The staff would dearly love to have more, but need more generous donors to buy them. (They have a Pelican Bag they don't feel able to use until someone covers the cost).

The Cancer Clinic, happily, had some discretionary donations available. They were able to buy five Bear Chairs for the special children's waiting room used by out-of-town children coming for cancer treatment.

The Victoria General's children's ward has two Bear Chairs give by the Order of the Eastern Star's Lamplighter Club.

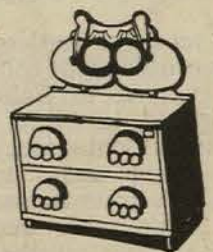
8
PELICAN BAGS



\$125

What The Creek wants to do is introduce some generous people with spare play money to the Animal Farm menagerie. We guarantee it will be love at first sight and the thought of putting a sparkle in some sick child's eyes will put one in yours.

8
HIPPODRESSERS



\$190

Those who belong to service clubs could suggest this to their Donations Committee (we did to the new Lions Club). Wouldn't it be great for Easter Seal House and Ronald McDonald House (both places where out-of-town sick children here for out-patient treatment stay with their mums) to have some Animal Farm furniture?

You can call Roger Dahlquist or Sylvia Rayer at 685-9534 or 736-1827, or yours truly Beryl Wilson at the Creek Office, 734-3369.

We know we have some generous people around. Please do prove it.

FALSE CREEK COMMUNITY ASSOCIATION

By Beryl Wilson

REPORT FROM MARCH 7 MEETING

1984 Dues and Budget adopted

1984 Budget

INCOME: 983 units @ \$5/unit ... \$4915

EXPENDITURES:

Administration:		
Postage ...	\$300	
Photocopying ...	350	
Office Supplies ...	300	
Miscellaneous ...	100	\$1050
Creek Newspaper ...		\$2000
Grants:		
July 1st	\$1000	
Seniors'		
Christmas Dinner	\$ 100	\$1100
Centennial Project Fund	765	\$4915

Some "Housekeeping" amendments to the Constitution and By-laws included changing the Annual Meeting date to the Fall.

School Cut-Backs

The Association supported sending two letters, drafted by Chris Allnutt of Creek Village:

To the Minister of Human Resources, Grace McCarthy, requesting reinstatement of the Child Care Worker position at False Creek School, which is due to be eliminated at the end of March.

To the Minister of Education, Jack Heinrich, requesting that the School Board's "needs" budget be approved in order that the two Supervision Aide positions at False Creek School will not be eliminated next Fall.

EXPO 86

It has been agreed to have a "shirt sleeve" session with EXPO staff at the next Community Association meeting on WEDNESDAY, APRIL 4 (7:30 p.m. at the Community Centre.)

If an Information Meeting for the community at

it should be all day (Saturday), Open House, or a shorter, evening question and answer session.

The Board Room space at the Centre is limited but extra chairs can be squeezed in for any residents interested in attending the April 4th meeting - especially if you phone beforehand to let us know (734-3369).

JOSEF SKALA, a long-time False Creeker, sent us this flier because he thought Creek residents, particularly those of European extraction, would enjoy the two plays.

He feels a special affinity for them, having known both authors personally.

Pavel Kohout, who came from Vienna to see the production, said that out of 18 interpretations he had seen of the central character, Vanek, Josef's

came the closest to the one he'd had in mind.

Yet Josef doesn't call himself a stage actor. By day he conducts cancer research in leukemia and his thespian activities have mostly been in radio drama on C.B.C.

I haven't seen the plays yet, but recalling, "Fire In The Basement" I would recommend them if you like interesting and powerful theatre.

Beryl Wilson

Because the boat issue is an important one, we are printing the text of the Community Association brief prepared for Council. It was not delivered completely as written due to the developments that took place between March 7 and 13.

Mayor M. Harcourt and Members of Council:

RE: B.C. Place application to relocate 94 boats at Heather Marina

At a meeting of the False Creek Community Association on March 7th, a motion was passed to oppose the application of B.C. Place to relocate boats from the False Creek Marina in Heather Marina.

Other speakers are addressing the concerns about inadequate marina facilities, cluttering the Heather basin and preventing it being a recreational bay, increased garbage dumping and, most of all, traffic and congestion, which are separate issues from parking. It is not necessary for the Association to dwell on these.

The community's rejection of the proposal does not mean it is opposed to the massive north shore redevelopment. We too hope it will be good for the city. Obviously the south shore of False Creek has to absorb some

negative impacts and it already has. It simply doesn't want to take more than its fair share of the disruption.

We have had log booms moored off the south shore. It proved not to be a problem and was temporary. We have Stadium patrons parking on the south shore. This is not temporary. Construction noise has been loud and with expectation of 24 hour work on the EXPO site and a new Cambie Bridge, this kind of disruption will probably worsen.

We welcome the adjacent Imperial site development as potential good news for some of our commercial tenants but view the increased traffic with apprehension.

A 150 seat restaurant is planned at the water's edge next to Heather Marina which will add to the existing crowding of the parking areas and chaos on Moberley Road and Stamps Landing cul-de-sac. These additions will be permanent.

B.C. Place and EXPO are not concerned with these new developments the south shore must absorb, but we are. Adding 94 boats into the area is one impact too many.

B.C. Place stresses the measure is temporary. Quite apart from whether

the community trusts the players to ensure this, when more pressures will make an already difficult day-to-day situation intolerable, three years is not temporary - it seems forever.

All communities with serious traffic problems are as weary of trying to solve them as Council must be of hearing about them. We cannot emphasize too strongly that there are NO mitigating measures that can be taken to solve the existing chaos at the Stamps Landing cul-de-sac - there is simply no room to redesign the area.

We concur with the admonitions of the False Creek Development Group that the south shore should be a showpiece for Vancouver during Centennial year and that accommodating EXPO disruption should not be allowed to destroy its ambience just at the time it is to open to world wide scrutiny.

Lastly, the Association is disturbed, yet again, at the process, or lack of it. The reaction of the community would probably have been the same, even given more time for orderly internal consultation, but at least it might have been calmer. This shotgun approach never does much good for community relations, as Council well knows.

BUYING BETTER INSURANCE

You lucky residents of False Creek South live in one of the most beautiful areas of the world. Yours is a serene world of quiet water with a beautiful city, and a post card back-drop of snow-clad mountains in the background.

Yet disaster could strike you in the form of Fire, Wind, Lightning, Hail, Water Damage, or Criminal activity next week or next year.

Sure, you probably have an insurance policy now - but will it be good enough if disaster strikes?

Experience shows most people commonly underestimate the replacement values of their personal possessions. The chesterfield that you purchased in 1980 for \$1,000 will cost \$2,200 to replace, the TV set you purchased for \$600 now costs \$1,100. The list goes on and on - the shirts you paid \$9.00 for are selling for \$27.00, the \$200 suit costs \$450 to replace.

What's the answer?

If you are a tenant (renter), or condominium owner, or a home-owner, obtain a Contents Evaluation Guide from your insurance agent. Spend 20-30 minutes to fill it in. You

will be surprised at the Replacement Value of your possessions.

Everyone should complete a Contents Evaluation Guide at least every 5 years. Pictures should be taken of each room showing your valuables. This evaluation, together with the pictures, should be placed in safe-keeping, preferably in your safety deposit box. When you are "standing in a pile of ashes", emotionally distraught, trying to remember what you had before the fire, you are in real trouble.

by
Harold G. Brown, A.I.I.C.

Your Insurance policy properly done will guide you with "new for old".

Wise consumers practice comparative shopping. Also, they do not always buy based on price alone. This is especially true when it comes to insurance.

Take, for example, the young machinist and wife who called our office last week and requested an \$8,000 Tenant's Package Policy. After completing the Evaluation Guide they were surprised to learn it would cost them \$6,000 just to replace their clothes alone. This was before they added in their \$1,000 television set, \$1,000 stereo \$1,500 record collection, \$1,500 chesterfield suite, etc. They requested an

\$8,000 policy when they needed a minimum of \$16,000.

While this situation is not uncommon, what is most amazing is that you can buy \$16,000 from one insurance agency for the price of \$8,000 in another insurance company. Shop around!

Also, watch out for the agent who says, "everything is covered". All insurance policies contain exclusions, items and perils which are not insured.

There are "special item limitations" in your policy. The amounts payable for jewellery, furs, watches, garments trimmed with fur, silverware, money, coins, stamps, are often limited to \$1,000 or less. You get around this by specifically adding "special items" to your policy.

Look for an agent who is willing to spend some time gaining knowledge of your personal situation. Chances are good you will end up buying better insurance.

About the Author

Born in Vancouver, Harold G. Brown, A.I.I.C. is an Accounts Executive with Underwriter's Insurance Agencies (Vancouver) Ltd. He has 29 years experience handling all types of general insurance and was previously manager in Western Canada for Safeco Corporation and Allstate Insurance Company of Canada.

an evening of
Czechoslovakian
Theatre
PROTEST by VACLAV HAVEL
and
PERMIT by PAVEL KOHOUT
author of FIRE IN THE BASEMENT

Featuring
Josef P. Skala
John Destrý Adams
Lorraine Butler
Patricia Helgason
Eileen Barrett
S. Hartan

Directed by
Kico Gonzalez-Bisso



Kits House Hall 7th & Vine
March 7 - 31 8:30 P.M.
Wed.-Thur. \$5.00 Fri.-Sun. \$6.00
Students & Seniors Discount
Tickets at the door
Reservations & Information
736-3580

DENTAL DIGEST

Brought to You By

Dr. JIMMIE WALKER, JR.
D.M.D., B.S.

GENERAL PREVENTATIVE
DENTISTRY
676 Leg-in-Boot Square
False Creek
Tel: 874-9388

WHAT IS PLAQUE?

Dental awareness is understanding the basic need to maintain the health of the teeth and gingiva (gums).

Dental plaque, which can form on the teeth, is a combination of food particles, saliva, and bacteria. If not removed, this sticky film attracts different types of bacteria that release waste products (acids). These



acids attack the tooth structure and gingival tissue, causing decay and periodontal disease (pyorrhea).

Control of dental plaque begins at home . . . In the next issue we will take a closer look at the process of plaque formation.



put your waste
on a diet
RECYCLE

WHY RECYCLE?
by

Richard Thaddeus

Because it saves natural resources, energy, landfill space, taxes, and helps protect our environment.

Over 1,000,000 tons of garbage are collected in Greater Vancouver every year. The cost to dispose of it is about \$20 a ton, and rising fast. If, by recycling, we could reduce the volume by 10% this would result in 100,000 fewer tons going to our landfills and save about \$2 million.

Many people are sympathetic to the idea of recycling but find it difficult to practice. S.P.E.C. who pioneered recycling in Vancouver has now opened a convenient depot and offers a pick-up service.

1650 WEST 5th
(the light blue building
between Fir and Pine)

False Creek living is especially conducive to recycling. All housing complexes have controlled garbage collection areas and members of co-ops and strata corporations can decide how to dispose of their waste.

Managements, if not convinced of the ecological benefits of recycling might be persuaded by the financial gains in reducing the number of containers they pay to have cleared.

The new S.P.E.C. depot is at 1650 West 5th Ave. (the light blue building between Fir and Pine). There are separate bins for paper, cans and glass and the depot hopes to take plastics in the near future.

Current opening hours are:
SUN - WED. 9 a.m. - 5 p.m.
THUR & FRI 9 a.m. - 8 p.m.
For pick-up service phone 736-8638.

The depot acknowledges the vital support of the City of Vancouver, Mohawk Oil, and International Paper.

WHAT'S IN A QUOTE?

"The continued financial health of The Creek, that's what. Devastating news this week. TIMES PRINTER is closing shop this week.

They have charged \$214 to print 4000 copies of The Creek and have given us marvellous service. Other quotes have been 1/3 to 1/2 more - too rich for The Creek's budget.

DOES ANYONE work with a printing outfit that can give us a good price?

Suggestions PLEASE - before we need to go to press on April 15.

NOTE: this is printing only.

Our typesetting is done by KAL PRINTERS at 7th & Laurel and while we're tossing out bouquets we cannot praise their service too highly. They set our copy and ads in 72 hours or less (Ed. does the paste-up).

Mind you, Manager John Arksey is fond of The Creek - he lives in the Netherlands complex.

The Creek is published on the 15th of every month.

Editor: Beryl Wilson
Creek Office: 734-3369

Mailing Address:

The Creek
c/o False Creek Community Centre
1318 Cartwright Street,
Vancouver, B. C. V6H 3R8

ADVERTISING RATES

	One-Time	3 Insertions (10% discount)	6 Insertions (15% discount)
FULL PAGE	\$350	\$315	\$297.50
1/2 Page	\$200	\$180	\$170
1/4 Page	\$105	\$94.50	\$89.25
1/8 Page	\$55	\$49.50	\$46.75

Small boxed ad \$6/ col. inch
Announcements \$4/ col. inch

For information on advertising and
FLYER DELIVERY, call 734-3369

TENANTS PACKAGE POLICY
with replacement cost
\$15,000 for \$98.00
CALL

HAROLD G. BROWN
UNDERWRITERS' INSURANCE AGENCIES
980 West Pender St., Vancouver, B. C. V6C 1L5
Tel. 683-2511

CALL US FOR YOUR BOAT INSURANCE
A lot of people in False Creek do
Special rates and coverages available

Vancouver's speciality
Video Store is in
your neighbourhood!

Finest selection of
CLASSICS • FOREIGN
& MUSIC VIDEO

NO MEMBERSHIP FEE!

VIDEO MATICA

VHS MOVIE RENTALS

1829 WEST 4th AVE. AT BURRARD 734-0411

OPEN 7 DAYS A WEEK



HI! I'M SAL, YOUR FRIENDLY
FALSE CREEK
CLEANING LADY.



As a result of Beryl's interview with me, most of my work is now in False Creek/Fairview Slopes and I am beginning to feel part of this community. My clients are the nicest people! It's a pleasure to come to work here.

I now have a few times available for new housecleaning contracts. If you are looking for reliable, personalized service, please call me at

731-5077
(local references upon request)

THIS MONTH
at the
COMMUNITY
CENTRE

BIKE MAINTENANCE
WORKSHOP

SAT. MARCH 24
9:00 - 5:00 p.m.
Pre-Register \$12

Be sure to drop in to the

FLEA MARKET
at the Community Centre
SAT. MARCH 31
10:00 - 3:00 p.m.

One person's junk is
another's jewel

1/2 table \$7 Full table \$14

the Trestle
SEAFOOD HOUSE

656 Leg-in-Boot Square, False Creek

872-1242 reservations appreciated

A lot has been happening at THE TRESTLE in Leg-in-Boot Square. There is a new manager, RON VANDENBERGHE, and Chef, JACQUES RODRIGUE, a new menu, and a new décor is planned as well.

The menu is predominantly seafood but includes meat and pasta dishes. The new team plans to make The Trestle "the best seafood restaurant in town" - a logical aim, given the superb waterfront location, the affordable prices, and the experience Ron and Jacques bring with them.

Head Chef Jacques apprenticed at the Chateau Frontenac in Quebec City, his hometown. His first spot in Vancouver was La Brasserie in Gastown. By only 21 years of age he was Sous Chef at the Broadway Holiday Inn, then went on to Umberto's, Magnolia's, and the Sheraton Plaza 500.

Although he's expert with French cuisine, Jacques' great love is fish. He's as happy as a clam to have landed at the Trestle to work with a manager equally enamored with it.

People often say "this is the best seafood crepe I've ever tasted", and the new Pier Platter is a sensation - a feast for the eye as well as the palate.

Like all good chefs, Jacques is as much an artist as he is a cook. He will happily show pictures of some of his spectacular presentations: the peacock with an exquisite tail of asparagus and sliced eggs that he made for the B.C. Chef's Association banquet, or his 8' x 5' Medieval Inn made one Christmas at the Holiday Inn. It took 612 hours to create, used 10,000 sugar cubes, a pound of spaghetti, a pound of sliced almonds, and 55 lbs. of shortening for the ice.

Jacques loves to compete. In the Sea Festival Hotel Olympiads he had to decorate a cake blindfolded. In another competition Jacques came in 4th when each of 12 chefs, in the space of 60 seconds,

made a radish rose
cut a carrot into 24 two-inch pieces
peeled an apple without breaking the peel
chopped an onion, and
shaped a potatoe with 7 cuts

Manager RON VANDENBERGHE is a high energy person who likes being "kept on his toes". The restaurant business certainly does that. Not one of the myriad details can be left unattended for a day.

When asked to comment on selecting staff, Ron said, "There are Waiters, and there are Table Servers and there's a world of difference between the two. The professional waiter takes great pride in his vocation. Visually reading the needs of the clientele is an acquired skill which the professionals have."

Apart from building a good luncheon trade and encouraging people from all areas of the city to dine at "the best seafood restaurant in town," Ron encourages False Creek residents to consider The Trestle their "neighbourhood restaurant."